



**Ministry of Education, Sports and Culture**

**EDUCATION  
STATISTICAL DIGEST**

2008

**SAMOA**

## **Introduction**

The Statistical Digest provides a range of statistics and performance measures related to school education in Samoa.

The information included in the digest is the latest information that is available as of May 2008. Historical data has also been included to reflect changes over time.

The Digest is divided into two parts:

- Part 1 – Data from School Census Information System
- Part 2 – Data from sources other than the School Census Information System

### **Part 1**

#### **Data from School Census Information System**

The Annual School Census data collection held on 5<sup>th</sup> March 2008, is a major source of statistical information. The census data is stored in the Ministry's school census information system called Manumea. The school census information system includes a series of reports, which can be automatically produced. These reports are contained in Part 1 of the Statistical Digest.

### **Part 2**

#### **Data from sources other than the School Census Information System**

The Ministry of Education, Sports and Culture's performance measure framework includes a range of indicators that are not automatically produced from the School Census Information System. Data has been assembled from a range of sources such as examination results and personnel information. This information is contained in Part 2 of the Statistical Digest.

Statistical Digest produced by:  
Policy, Planning and Research Division  
Ministry of Education Sports & Culture  
Samoa

**Phone:** 21911

**Fax:** 21917

**Email:** [samoamesc@lesamoa.net](mailto:samoamesc@lesamoa.net)

July 2008

## Table of Contents for Part 1 – Data from School Census Information System

Number of schools by school type and district, 2008.....	1
Size of government schools by district, 2008.....	2
School enrolments by level, gender and status, 2008.....	3
School enrolments for all schools, 1999 – 2008.....	4
School enrolment for government schools, 1999 – 2008.....	4
Percentage enrolments in government schools, 1999 – 2008.....	5
Male school enrolments, all schools, 1999 – 2008.....	6
Percentage male enrolments, all schools, 1999 – 2009.....	6
School enrolments by district and maximum level provided, 2008.....	7
Number of repeaters by level in 2008.....	8
Repeaters in all schools by level, 1999 – 2008.....	8
Percentage of repeaters in all schools by level, 1999 – 2008.....	9
Transition rates by year level, 1999 – 2008.....	10
Drop out rates (percentage) by year level, 1995 – 2008.....	11
Number of teachers by school type and district, 2008.....	12
Student-Teacher ratio by school type and district, 2008.....	13
Student-Teacher ratio by level, government schools, 1999 - 2008.....	14
Number of students absent on Census day (5 <sup>th</sup> March 2008).....	15
Number of government secondary schools teaching curriculum subjects by level.....	16
Primary school facilities by Controlling Authority, 2008.....	17
Secondary school facilities by Controlling Authority, 2008.....	17

## Table of Contents for Part 2 – Data from sources other than School Census Information System

Average raw score at National Year 8 Examinations.....	1
Number of students sitting Year 8 Examinations.....	1
Percentage of Year 8 students that sat the Year 8 Examinations.....	1
Average raw score at National Year 12 Examinations.....	2
Number of students sitting National Year 12 Examinations.....	2
Primary students identified as at Risk, Year 4, All Schools (Government and Non-Government).....	3
Primary students identified as at Risk, Year 6, Government Schools.....	4
National Age Participation Rates.....	5
No. of Government schools that are meeting the national standards for primary student-teacher ratio of 1 teacher to 30 students (1:30).....	6
No. of Government schools that are meeting the national standards for secondary student-teacher ratio of 1 teacher to 20 students (1:20).....	6
Apparent Retention Rate for all schools.....	7
Students commencing first year of tertiary studies.....	7
Transition Rate from Year 13 to identified tertiary education.....	7

## Definitions

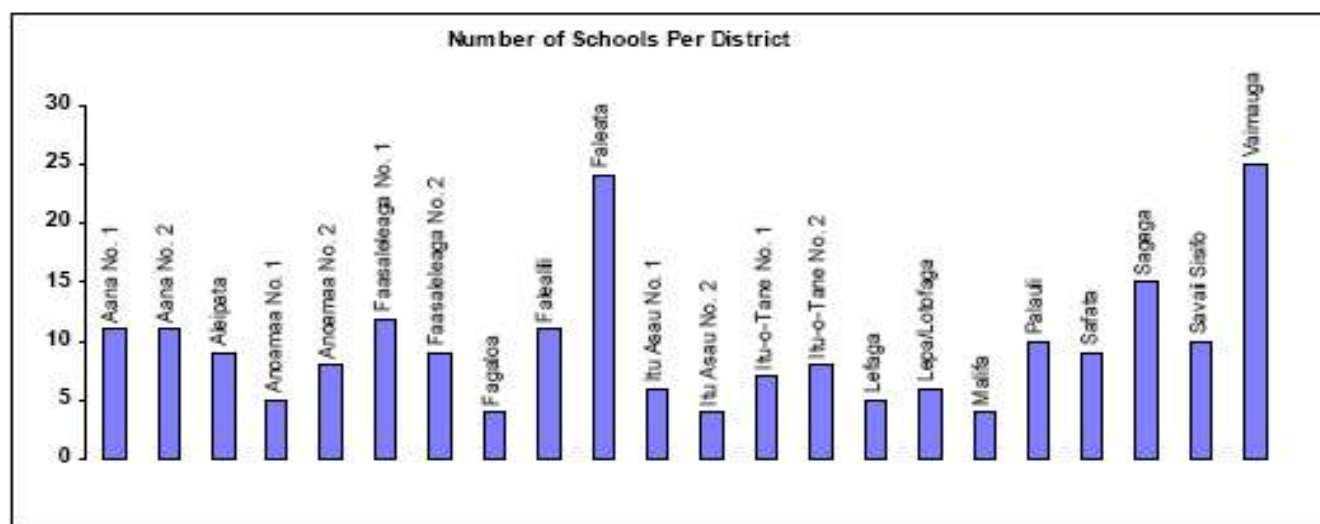
<i>Apparent Retention Rate</i>	compares the number of students in a given year with the size of the cohort. For example, the apparent retention rate of Years 9-12 for 2008 is calculated as the number of students in year 12 in 2008 divided by the number of students in year 9 in 2005.
<i>Completion Rates</i>	the percentage of students sitting the national exams is a measure of completion rates, e.g. percentage of students sitting year 8 exam is a measure of how many students starting year 8 actually complete year 8.
<i>Drop-out Rate</i>	The percentage of students who neither progressed from one level to the next or repeat the level.
<i>Pri-Sec (Primary-Secondary)</i>	A school that provides both primary and secondary levels, e.g. Fagaloa Secondary School has Year 7 & 8 levels. It should be noted that Robert Louis Stevenson School is counted as two schools because of their physical locations.
<i>SPELL Test</i>	A test taken by all year 4 and year 6 students in Government schools. Most Non-Government schools also participate, but it is not compulsory. It provides an indication of the students whose learning outcomes are identified as being at risk so that they receive attention from teachers in their reading and numeracy programmes.
<i>Student Teacher Ratio</i>	is calculated as the number of students at a school divided by the total number of teachers (including Principals) at the school. Data is from Annual School Census.
<i>Transitional Rate</i>	is the percentage of students who complete one level and move on to the immediate level. For example, the transitional rate into Post-Secondary studies is the number of students who commenced post-secondary education in 2008 (Institute of Higher Education, Institute of Technology) as a percentage of the students who were in Year 13 in 2007.

*Part 1 – Data from School Census*

*Produced using Manumea, the School  
Census Information System*

Number of schools by school type and district, 2008

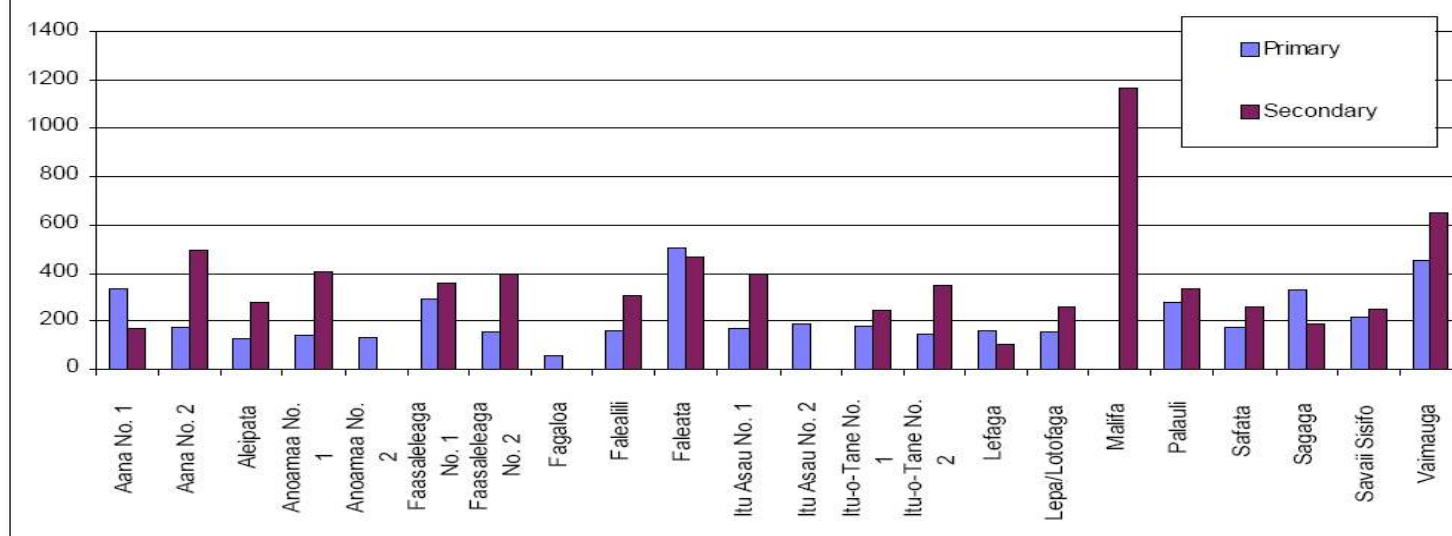
Region/District	Government				Mission				Private				Grand Total
	Primary	Pri-Sec	Secondary	Total	Primary	Pri-Sec	Secondary	Total	Primary	Pri-Sec	Secondary	Total	
<b>Apia Urban</b>													
Faleata	9		1	10	1	1	4	6	4	1	1	6	22
Malifa			1	1									1
Vaimauga	11		3	14	3	1	3	7	2			2	23
<b>Apia Urban Total</b>	<b>20</b>		<b>5</b>	<b>25</b>	<b>4</b>	<b>2</b>	<b>7</b>	<b>13</b>	<b>6</b>	<b>1</b>	<b>1</b>	<b>8</b>	<b>48</b>
<b>Rest of Upolu</b>													
Aana No. 1	7		1	8	1	1	1	3					11
Aana No. 2	10		1	11									11
Aleipata	8		1	9									9
Anoamaa No. 1	4		1	5									5
Anoamaa No. 2	6			6	2			2					8
Fagaloa	4			4									4
Falealili	9		2	11									11
Lefaga	4		1	5									5
Lepa/Lotofaga	5		1	6									6
Safata	8		1	9									9
Sagaga	8		1	9	3		2	5					14
<b>Rest of Upolu Total</b>	<b>73</b>		<b>10</b>	<b>83</b>	<b>6</b>	<b>1</b>	<b>3</b>	<b>10</b>					<b>93</b>
<b>Savaii</b>													
Faasaleleaga No. 1	6		1	7	3		1	4					11
Faasaleleaga No. 2	6		1	7	1	1		2					9
Itu Asau No. 1	5		1	6									6
Itu Asau No. 2	4			4									4
Itu-o-Tane No. 1	5		2	7									7
Itu-o-Tane No. 2	7		1	8									8
Palauli	7		1	8			1	1					9
Savaii Sisifo	8		2	10									10
<b>Savaii Total</b>	<b>48</b>		<b>9</b>	<b>57</b>	<b>4</b>	<b>1</b>	<b>2</b>	<b>7</b>					<b>64</b>
<b>Grand Total</b>	<b>141</b>		<b>24</b>	<b>165</b>	<b>14</b>	<b>4</b>	<b>12</b>	<b>30</b>	<b>6</b>	<b>1</b>	<b>1</b>	<b>8</b>	<b>203</b>



**Size of Government schools by district, 2008**

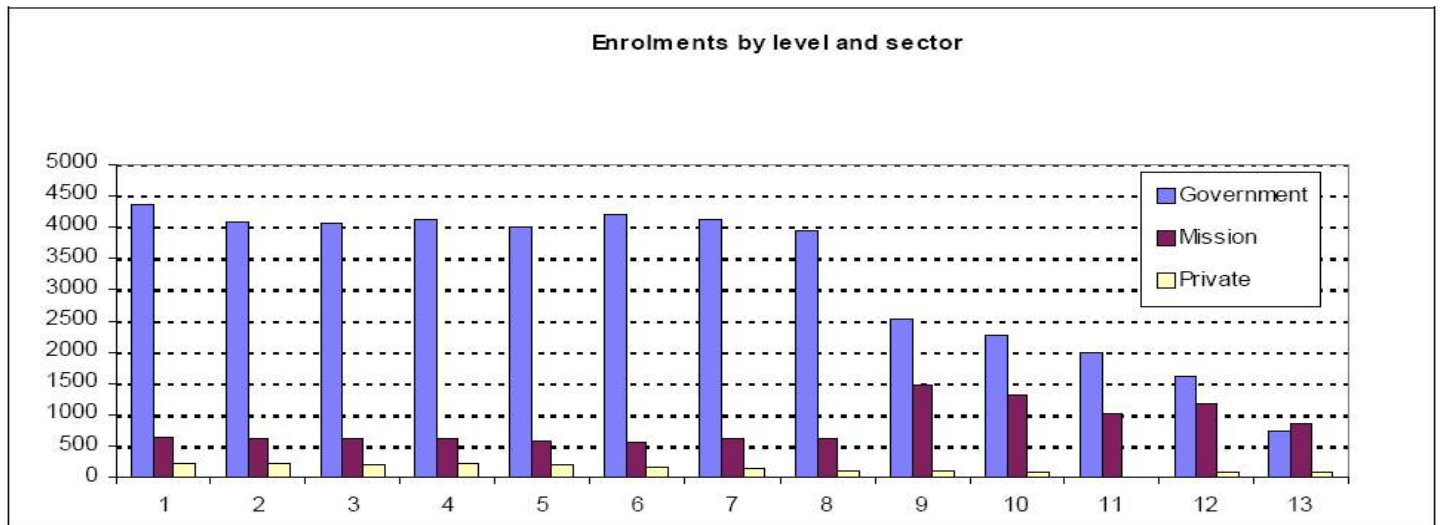
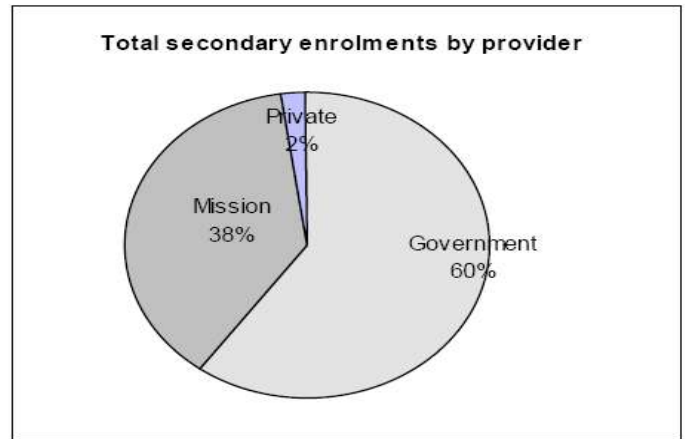
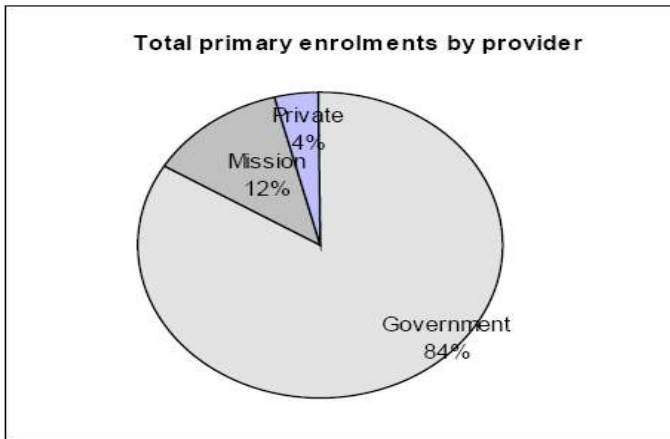
Region/District	Primary Schools				Secondary Schools			
	Number	Average Size	Minimum Size	Maximum Size	Number	Average Size	Minimum Size	Maximum Size
<b>Apia Urban</b>								
Faleata	9	502	229	821	1	466	466	466
Malifa					1	1165	1165	1165
Vaimauga	11	452	234	1144	3	648	537	817
Apia Urban Total	20	474	229	1144	5	715	466	1165
<b>Rest of Upolu</b>								
Aana No. 1	7	336	76	517	1	167	167	167
Aana No. 2	10	174	95	309	1	493	493	493
Aleipata	8	127	44	186	1	279	279	279
Anoamaa No. 1	4	142	108	192	1	401	401	401
Anoamaa No. 2	6	131	44	223				
Fagaloa	4	56	34	72				
Falealili	9	163	70	419	2	306	255	357
Lefaga	4	159	102	297	1	104	104	104
Lepa/Lotofaga	5	152	85	223	1	259	259	259
Safata	8	173	67	289	1	255	255	255
Sagaga	8	326	223	484	1	189	189	189
Rest of Upolu Total	73	185	34	517	10	276	104	493
<b>Savaii</b>								
Faasaleleaga No. 1	6	294	165	499	1	353	353	353
Faasaleleaga No. 2	6	155	70	276	1	395	395	395
Itu Asau No. 1	5	164	100	251	1	395	395	395
Itu Asau No. 2	4	187	121	250				
Itu-o-Tane No. 1	5	180	136	214	2	246	176	315
Itu-o-Tane No. 2	7	148	48	253	1	345	345	345
Palauli	7	281	159	526	1	335	335	335
Savaii Sisifo	8	216	164	319	2	249	247	250
Savaii Total	48	206	48	526	9	312	176	395
Grand Total	141	233	34	1144	24	381	104	1165

**Average size of Government schools by district**



**School enrolments by level, gender and status, 2008**

Level	Government			Mission			Private			All Schools		
	Males	Females	Total	Males	Females	Total	Males	Females	Total	Males	Females	Total
1	2,314	2,050	4,364	319	330	649	115	111	226	2,748	2,491	5,239
2	2,151	1,926	4,077	276	333	609	129	104	233	2,556	2,363	4,919
3	2,114	1,957	4,071	216	389	605	120	99	219	2,450	2,445	4,895
4	2,166	1,940	4,106	287	328	615	118	116	234	2,571	2,384	4,955
5	2,120	1,876	3,996	281	302	583	105	105	210	2,506	2,283	4,789
6	2,231	1,986	4,217	265	306	571	100	81	181	2,596	2,373	4,969
7	2,181	1,948	4,129	287	344	631	63	83	146	2,531	2,375	4,906
8	1,992	1,963	3,955	320	300	620	63	66	129	2,375	2,329	4,704
Primary Total	17,269	15,646	32,915	2,251	2,632	4,883	813	765	1,578	20,333	19,043	39,376
9	1,302	1,232	2,534	668	791	1,459	54	53	107	2,024	2,076	4,100
10	1,127	1,146	2,273	635	700	1,335	35	41	76	1,797	1,887	3,684
11	947	1,053	2,000	426	593	1,019	0	0	0	1,373	1,646	3,019
12	729	878	1,607	613	561	1,174	45	37	82	1,387	1,476	2,863
13	306	425	731	372	467	839	41	46	87	719	938	1,657
Secondary Total	4,411	4,734	9,145	2,714	3,112	5,826	175	177	352	7,300	8,023	15,323
Grand Total	21,680	20,380	42,060	4,965	5,744	10,709	988	942	1,930	27,633	27,066	54,699



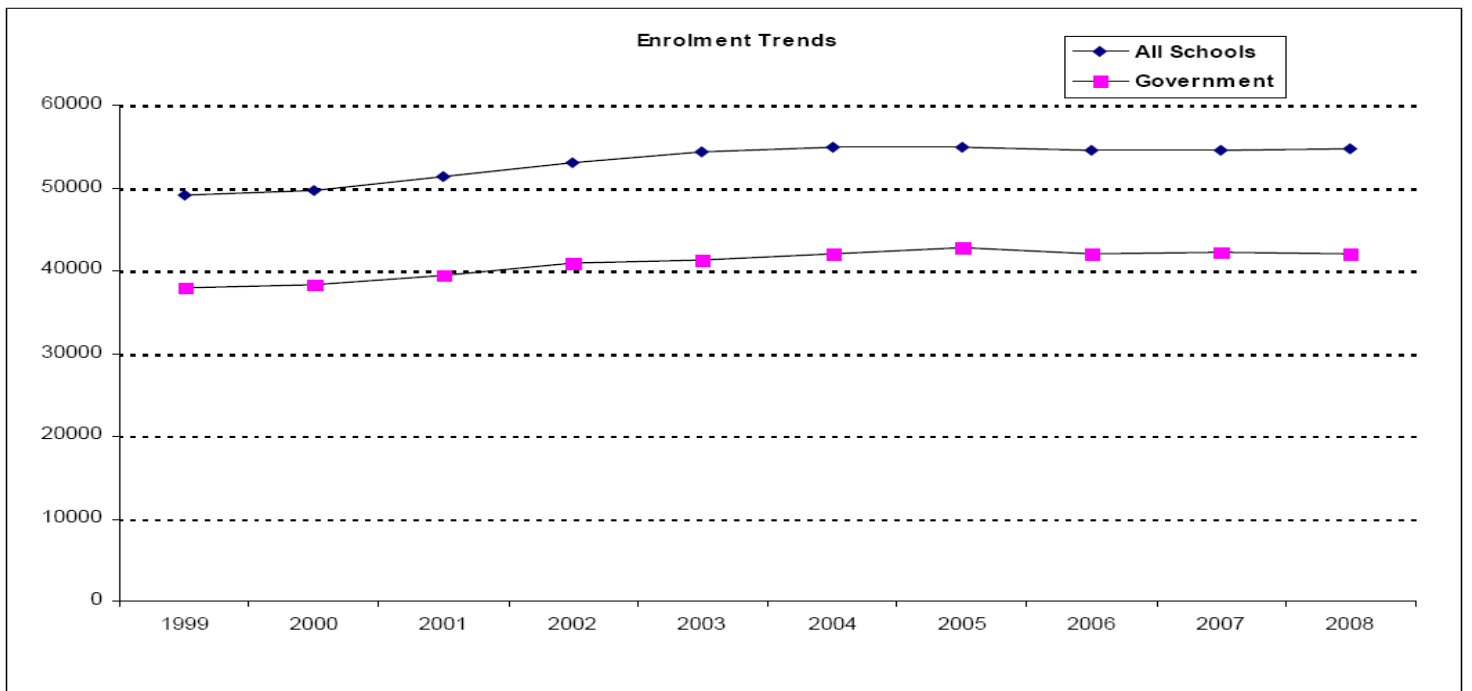


**School enrolments for all schools**

Year	Primary									Secondary						TOTAL	% Increase
	1	2	3	4	5	6	7	8	Total	9	10	11	12	13	Total		
1999	5,290	4,790	4,572	4,245	4,330	4,216	3,939	4,277	35,659	3,458	3,137	3,036	2,548	1,325	13,504	49,163	
2000	5,383	4,874	4,848	4,522	4,134	4,265	4,029	4,216	36,271	3,603	3,119	2,847	2,532	1,278	13,379	49,650	1
2001	5,802	5,001	4,830	4,876	4,480	4,214	4,184	4,303	37,690	3,629	3,257	2,805	2,565	1,395	13,651	51,341	3
2002	5,987	5,172	5,112	4,982	4,757	4,520	4,167	4,241	38,938	3,719	3,306	2,859	2,820	1,420	14,124	53,062	3
2003	5,893	5,424	5,119	5,104	4,769	4,750	4,390	4,190	39,639	3,729	3,563	3,038	2,881	1,616	14,827	54,466	3
2004	5,704	5,257	5,383	5,134	5,045	4,652	4,620	4,378	40,173	3,673	3,357	3,152	2,822	1,752	14,756	54,929	1
2005	5,471	5,130	5,153	5,248	5,041	4,921	4,591	4,519	40,074	3,876	3,355	2,973	3,101	1,584	14,889	54,963	0
2006	5,407	4,867	4,895	5,099	5,146	4,835	4,810	4,461	39,520	4,020	3,531	2,892	2,916	1,756	15,115	54,635	-1
2007	5,273	4,930	4,855	4,922	5,066	5,032	4,789	4,601	39,468	4,028	3,649	2,964	2,909	1,652	15,202	54,670	0
2008	5,239	4,919	4,895	4,955	4,789	4,969	4,906	4,704	39,376	4,100	3,684	3,019	2,863	1,657	15,323	54,699	0

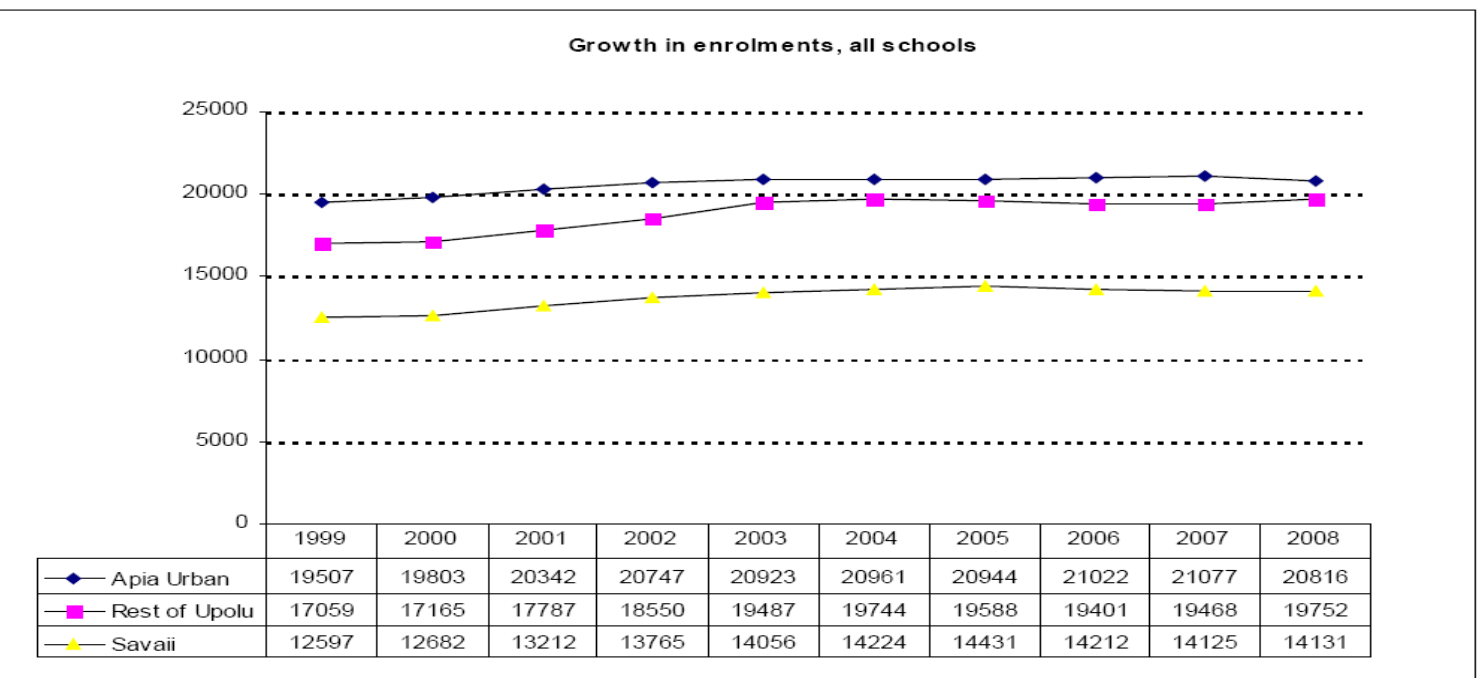
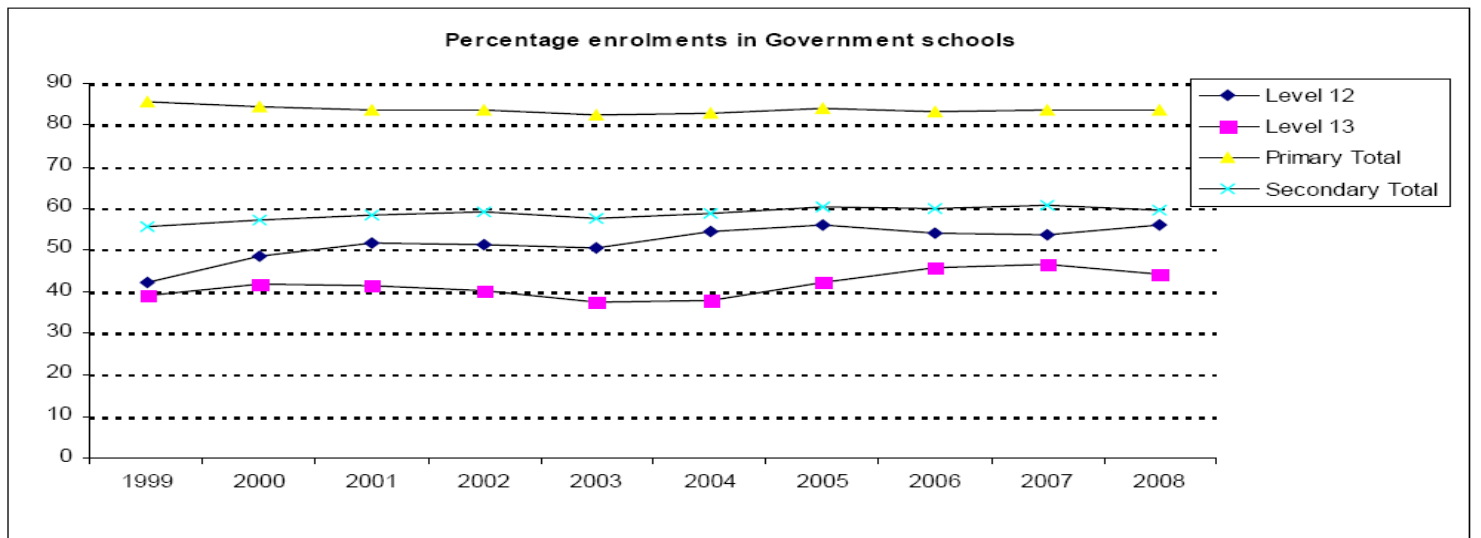
**School enrolments for Government schools**

Year	Primary									Secondary						TOTAL	% Increase
	1	2	3	4	5	6	7	8	Total	9	10	11	12	13	Total		
1999	4,483	4,055	3,856	3,575	3,702	3,588	3,425	3,806	30,490	2,145	1,936	1,862	1,079	520	7,542	38,032	
2000	4,487	4,060	4,117	3,800	3,504	3,590	3,459	3,624	30,641	2,264	1,839	1,784	1,231	536	7,654	38,295	1
2001	4,832	4,128	4,000	4,117	3,738	3,529	3,522	3,637	31,503	2,263	2,021	1,754	1,331	580	7,949	39,452	3
2002	5,029	4,330	4,242	4,163	4,009	3,780	3,498	3,572	32,623	2,386	2,102	1,851	1,449	571	8,359	40,982	4
2003	4,899	4,440	4,202	4,163	3,905	3,961	3,655	3,479	32,704	2,359	2,215	1,900	1,458	606	8,538	41,242	1
2004	4,718	4,384	4,461	4,258	4,188	3,875	3,802	3,620	33,306	2,334	2,141	2,022	1,533	663	8,693	41,999	2
2005	4,561	4,283	4,356	4,437	4,292	4,160	3,849	3,781	33,719	2,519	2,152	1,930	1,738	671	9,010	42,729	2
2006	4,481	3,974	4,081	4,305	4,338	4,105	3,984	3,702	32,970	2,487	2,235	1,962	1,577	806	9,067	42,037	-2
2007	4,372	4,085	4,026	4,135	4,299	4,299	3,994	3,811	33,021	2,533	2,304	2,064	1,556	771	9,228	42,249	1
2008	4,364	4,077	4,071	4,106	3,996	4,217	4,129	3,955	32,915	2,534	2,273	2,000	1,607	731	9,145	42,060	0



**Percentage enrolments in Government schools**

Year	Primary									Secondary						TOTAL
	1	2	3	4	5	6	7	8	Total	9	10	11	12	13	Total	
1999	84.7	84.7	84.3	84.2	85.5	85.1	87.0	89.0	85.5	62.0	61.7	61.3	42.3	39.2	55.9	77.4
2000	83.4	83.3	84.9	84.0	84.8	84.2	85.9	86.0	84.5	62.8	59.0	62.7	48.6	41.9	57.2	77.1
2001	83.3	82.5	82.8	84.4	83.4	83.7	84.2	84.5	83.6	62.4	62.1	62.5	51.9	41.6	58.2	76.8
2002	84.0	83.7	83.0	83.6	84.3	83.6	83.9	84.2	83.8	64.2	63.6	64.7	51.4	40.2	59.2	77.2
2003	83.1	81.9	82.1	81.6	81.9	83.4	83.3	83.0	82.5	63.3	62.2	62.5	50.6	37.5	57.6	75.7
2004	82.7	83.4	82.9	82.9	83.0	83.3	82.3	82.7	82.9	63.5	63.8	64.1	54.3	37.8	58.9	76.5
2005	83.4	83.5	84.5	84.5	85.1	84.5	83.8	83.7	84.1	65.0	64.1	64.9	56.0	42.4	60.5	77.7
2006	82.9	81.7	83.4	84.4	84.3	84.9	82.8	83.0	83.4	61.9	63.3	67.8	54.1	45.9	60.0	76.9
2007	82.9	82.9	82.9	84.0	84.9	85.4	83.4	82.8	83.7	62.9	63.1	69.6	53.5	46.7	60.7	77.3
2008	83.3	82.9	83.2	82.9	83.4	84.9	84.2	84.1	83.6	61.8	61.7	66.2	56.1	44.1	59.7	76.9

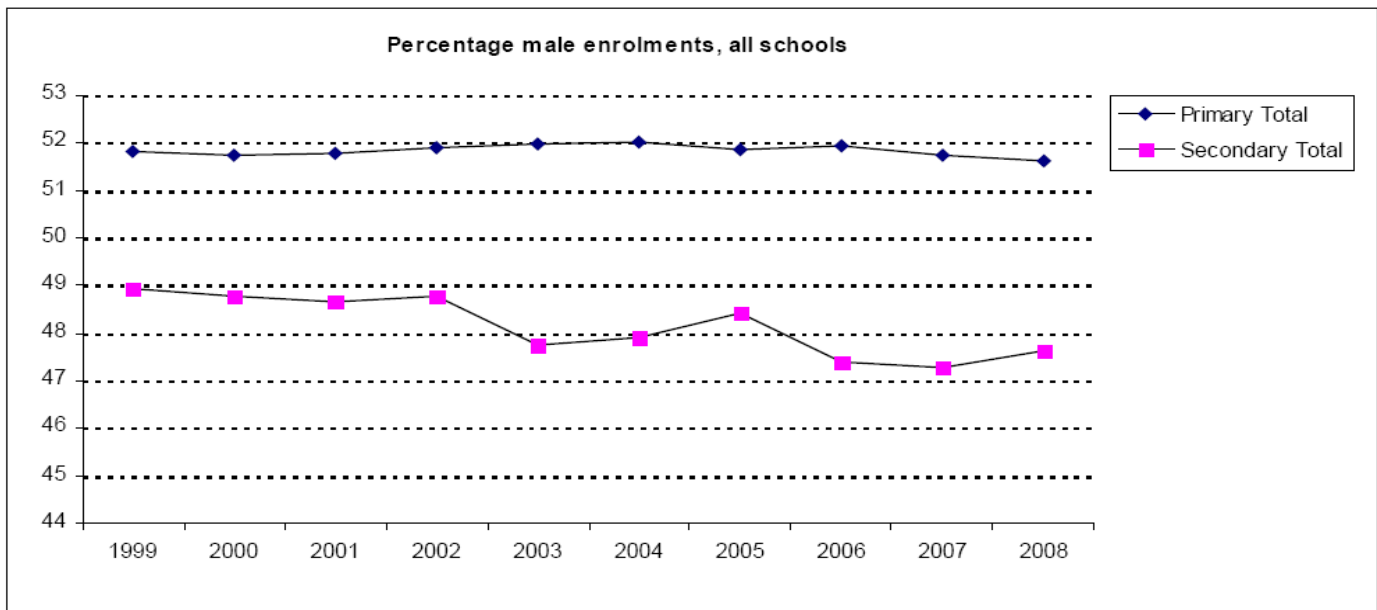


**Male school enrolments, all schools**

Year	Primary									Secondary						TOTAL	% Increase
	1	2	3	4	5	6	7	8	Total	9	10	11	12	13	Total		
1999	2,774	2,521	2,345	2,219	2,204	2,202	2,026	2,181	18,472	1,780	1,560	1,512	1,153	605	6,610	25,082	
2000	2,841	2,513	2,570	2,299	2,136	2,189	2,086	2,127	18,761	1,800	1,525	1,458	1,161	582	6,526	25,287	1
2001	2,964	2,623	2,526	2,592	2,303	2,173	2,122	2,216	19,519	1,795	1,579	1,420	1,194	655	6,643	26,162	3
2002	3,105	2,634	2,684	2,587	2,531	2,345	2,149	2,178	20,213	1,890	1,620	1,439	1,323	618	6,890	27,103	4
2003	3,111	2,833	2,606	2,678	2,440	2,531	2,261	2,144	20,604	1,837	1,728	1,469	1,338	705	7,077	27,681	2
2004	2,974	2,776	2,832	2,629	2,638	2,373	2,436	2,237	20,895	1,840	1,598	1,548	1,319	766	7,071	27,966	1
2005	2,883	2,696	2,708	2,735	2,556	2,559	2,323	2,322	20,782	1,989	1,660	1,401	1,435	727	7,212	27,994	0
2006	2,821	2,533	2,596	2,690	2,701	2,438	2,460	2,283	20,522	2,002	1,731	1,341	1,349	739	7,162	27,684	-1
2007	2,779	2,512	2,510	2,614	2,617	2,622	2,424	2,337	20,415	1,987	1,792	1,367	1,364	676	7,186	27,601	0
2008	2,748	2,556	2,450	2,571	2,506	2,596	2,531	2,375	20,333	2,024	1,797	1,373	1,387	719	7,300	27,633	0

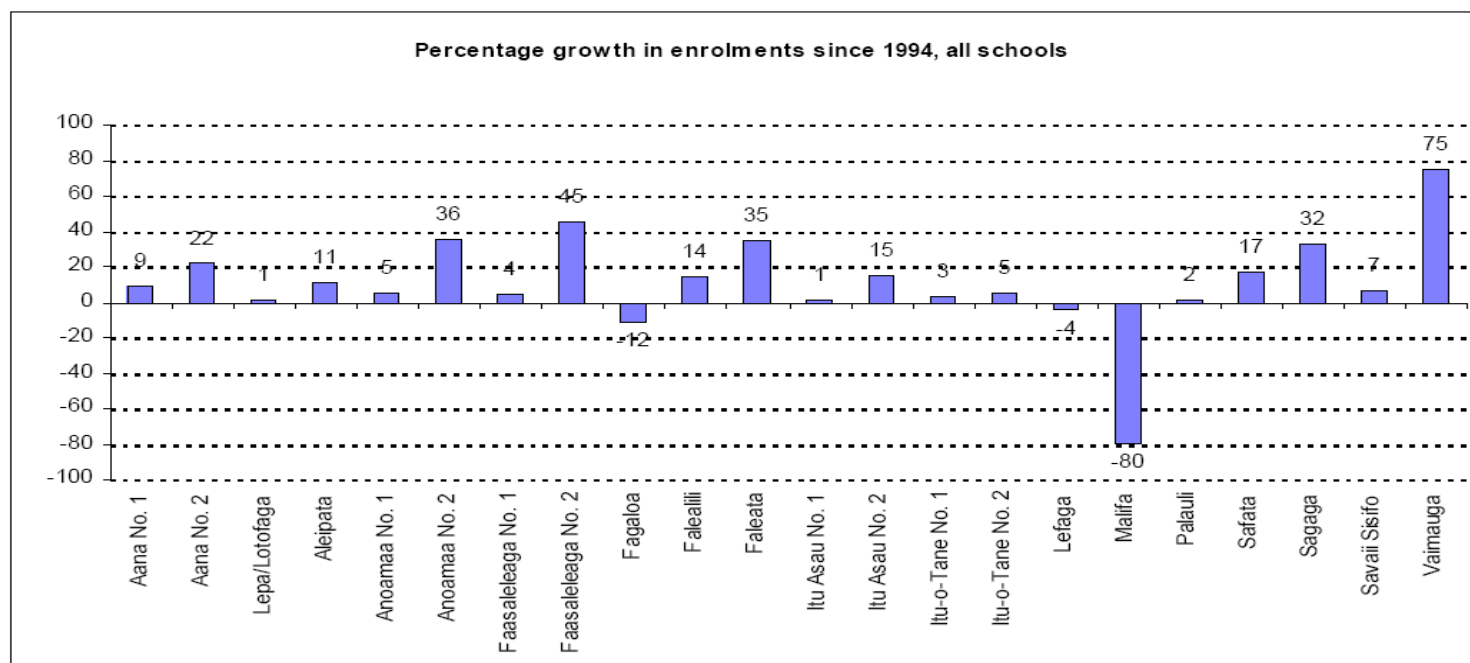
**Percentage male enrolments, all schools**

Year	Primary									Secondary						TOTAL
	1	2	3	4	5	6	7	8	Total	9	10	11	12	13	Total	
1999	52.4	52.6	51.3	52.3	50.9	52.2	51.4	51.0	51.8	51.5	49.7	49.8	45.3	45.7	48.9	51.0
2000	52.8	51.6	53.0	50.8	51.7	51.3	51.8	50.5	51.7	50.0	48.9	51.2	45.9	45.5	48.8	50.9
2001	51.1	52.4	52.3	53.2	51.4	51.6	50.7	51.5	51.8	49.5	48.5	50.6	46.5	47.0	48.7	51.0
2002	51.9	50.9	52.5	51.9	53.2	51.9	51.6	51.4	51.9	50.8	49.0	50.3	46.9	43.5	48.8	51.1
2003	52.8	52.2	50.9	52.5	51.2	53.3	51.5	51.2	52.0	49.3	48.5	48.4	46.4	43.6	47.7	50.8
2004	52.1	52.8	52.6	51.2	52.3	51.0	52.7	51.1	52.0	50.1	47.6	49.1	46.7	43.7	47.9	50.9
2005	52.7	52.6	52.6	52.1	50.7	52.0	50.6	51.4	51.9	51.3	49.5	47.1	46.3	45.9	48.4	50.9
2006	52.2	52.0	53.0	52.8	52.5	50.4	51.1	51.2	51.9	49.8	49.0	46.4	46.3	42.1	47.4	50.7
2007	52.7	51.0	51.7	53.1	51.7	52.1	50.6	50.8	51.7	49.3	49.1	46.1	46.9	40.9	47.3	50.5
2008	52.5	52.0	50.1	51.9	52.3	52.2	51.6	50.5	51.6	49.4	48.8	45.5	48.4	43.4	47.6	50.5



**School enrolments by district and maximum level provided, 2008**

Region/District	Primary Enrolments, all schools			Secondary enrolments, all schools			Max level in 1994		Max level in 2008	
	1994	2008	% Increase	1994	2008	% Increase	Govt	Non-Govt	Govt	Non-Govt
Faleata	4202	6018	43	2409	2908	21	11	13	13	13
Malifa	4223			1471	1165	-21	12		13	
Vaimauga	4142	7720	86	1990	3005	51	13	13	13	13
Apia Urban Total	12567	13738	9	5870	7078	21	13	13	13	13
Aana No. 1	2303	2676	16	760	659	-13	11	12	12	13
Aana No. 2	1600	1735	8	227	493	117	11		13	
Aleipata	915	1012	11	246	279	13	11		12	
Anoamaa No. 1	767	569	-26	156	401	157	11		13	
Anoamaa No. 2	936	1269	36				8	8	8	8
Fagaloa	252	223	-12				8		8	
Falealili	1472	1463	-1	342	612	79	11		13	
Lefaga	656	634	-3	113	104	-8	11		13	
Lepa/Lotofaga	795	759	-5	213	259	22	11		13	
Safata	1235	1386	12	171	255	49	11		12	
Sagaga	2433	3481	43	1315	1483	13	11	13	12	13
Rest of Upolu Total	13364	15207	14	3543	4545	28	11	13	13	13
Faasaleleaga No. 1	1850	2122	15	765	602	-21	11	13	13	13
Faasaleleaga No. 2	791	1104	40	447	697	56	11	13	13	13
Itu Asau No. 1	983	822	-16	217	395	82	11		13	
Itu Asau No. 2	652	749	15				8		8	
Itu-o-Tane No. 1	839	899	7	505	491	-3	13		13	
Itu-o-Tane No. 2	1101	1038	-6	217	345	59	11		12	
Palauli	1818	1966	8	771	673	-13	11	13	13	13
Savaii Sisifo	1764	1731	-2	326	497	52	11		13	
Savaii Total	9798	10431	6	3248	3700	14	13	13	13	13
Grand Total	35729	39376	10	12661	15323	21	13	13	13	13

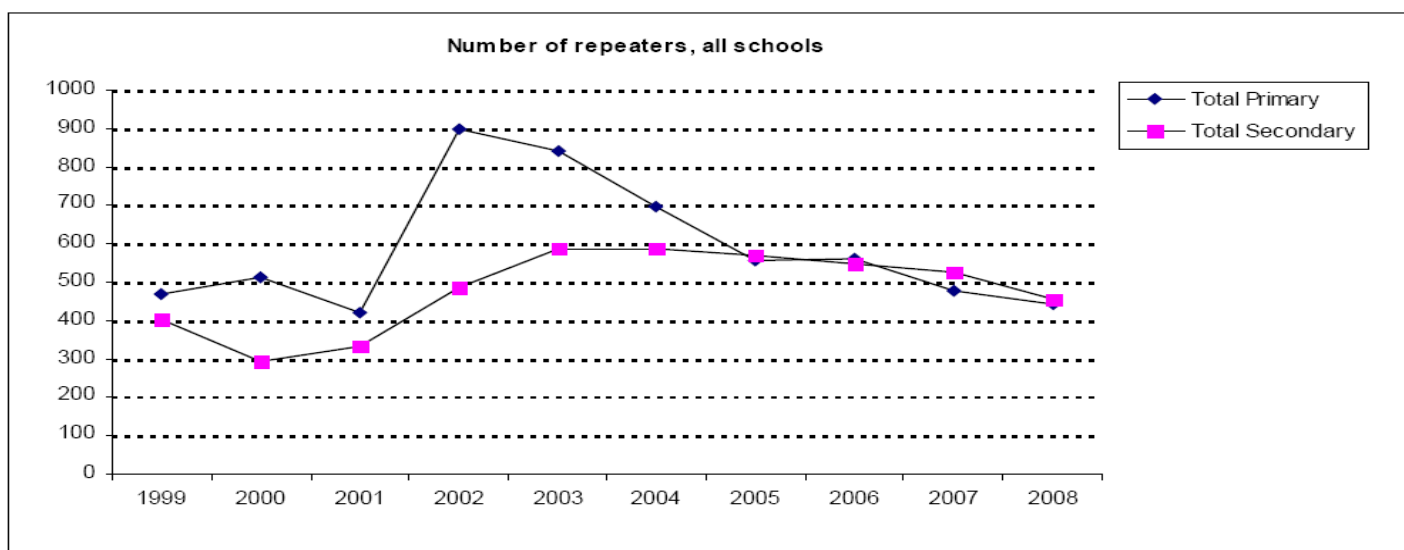


**Number of repeaters by level in 2008**

Level	Number of Repeaters				Percentage of Enrolment			
	Government	Mission	Private	Total	Government	Mission	Private	Total
1	98	22	6	126	2.2	3.4	2.7	2.4
2	36	3	4	43	0.9	0.5	1.7	0.9
3	33	4	2	39	0.8	0.7	0.9	0.8
4	42	14	6	62	1.0	2.3	2.6	1.3
5	22	0	4	26	0.6	0.0	1.9	0.5
6	38	9	3	50	0.9	1.6	1.7	1.0
7	26	9	3	38	0.6	1.4	2.1	0.8
8	51	9	1	61	1.3	1.5	0.8	1.3
Total Primary	346	70	29	445	1.1	1.4	1.8	1.1
9	18	5	0	23	0.7	0.3	0.0	0.6
10	24	3	0	27	1.1	0.2	0.0	0.7
11	100	13	0	113	5.0	1.3	#Error	3.7
12	101	79	5	185	6.3	6.7	6.1	6.5
13	40	59	10	109	5.5	7.0	11.5	6.6
Total Secondary	283	159	15	457	3.1	2.7	4.3	3.0
Total	629	229	44	902	1.5	2.1	2.3	1.6

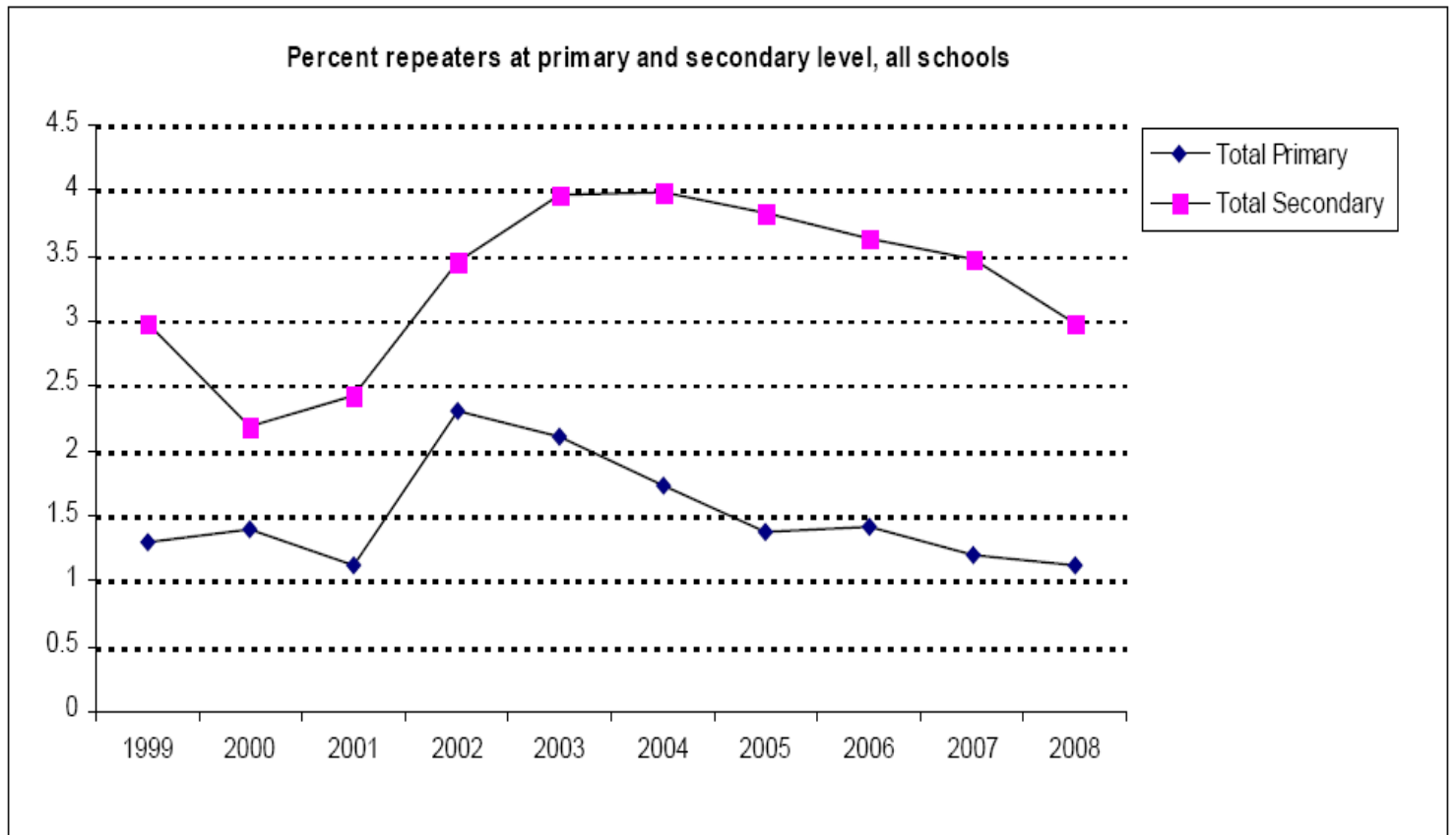
**Repeaters in all schools by level**

Year	Primary									Secondary						TOTAL
	1	2	3	4	5	6	7	8	Total	9	10	11	12	13	Total	
1999	150	35	20	24	21	16	15	187	468	16	12	182	154	38	402	870
2000	125	47	35	22	20	33	37	192	511	6	11	108	123	46	294	805
2001	142	36	20	29	26	12	34	122	421	15	14	112	113	78	332	753
2002	306	88	69	83	66	47	53	188	900	20	12	87	258	112	489	1,389
2003	345	70	58	66	40	62	45	155	841	19	8	139	279	143	588	1,429
2004	234	69	51	55	63	43	33	148	696	9	32	112	339	96	588	1,284
2005	223	51	34	41	36	24	41	105	555	32	28	88	274	148	570	1,125
2006	206	51	46	44	31	25	28	130	561	24	25	176	204	120	549	1,110
2007	205	39	22	55	17	28	42	70	478	46	12	108	245	116	527	1,005
2008	126	43	39	62	26	50	38	61	445	23	27	113	185	109	457	902



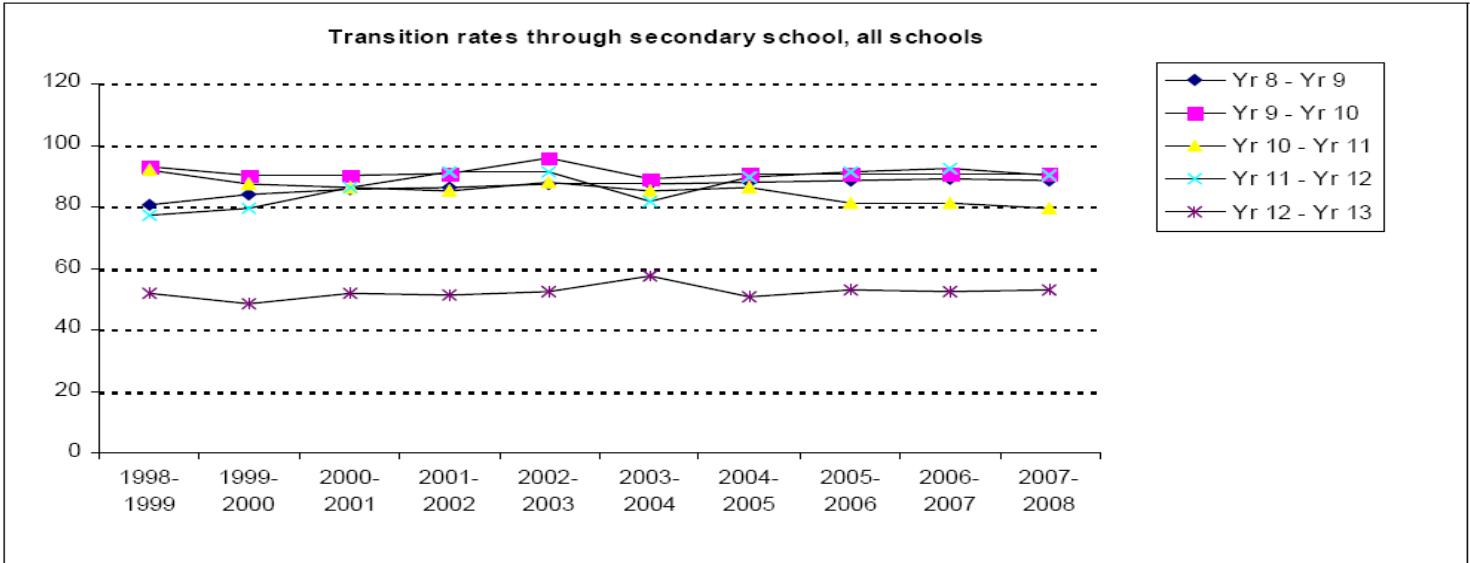
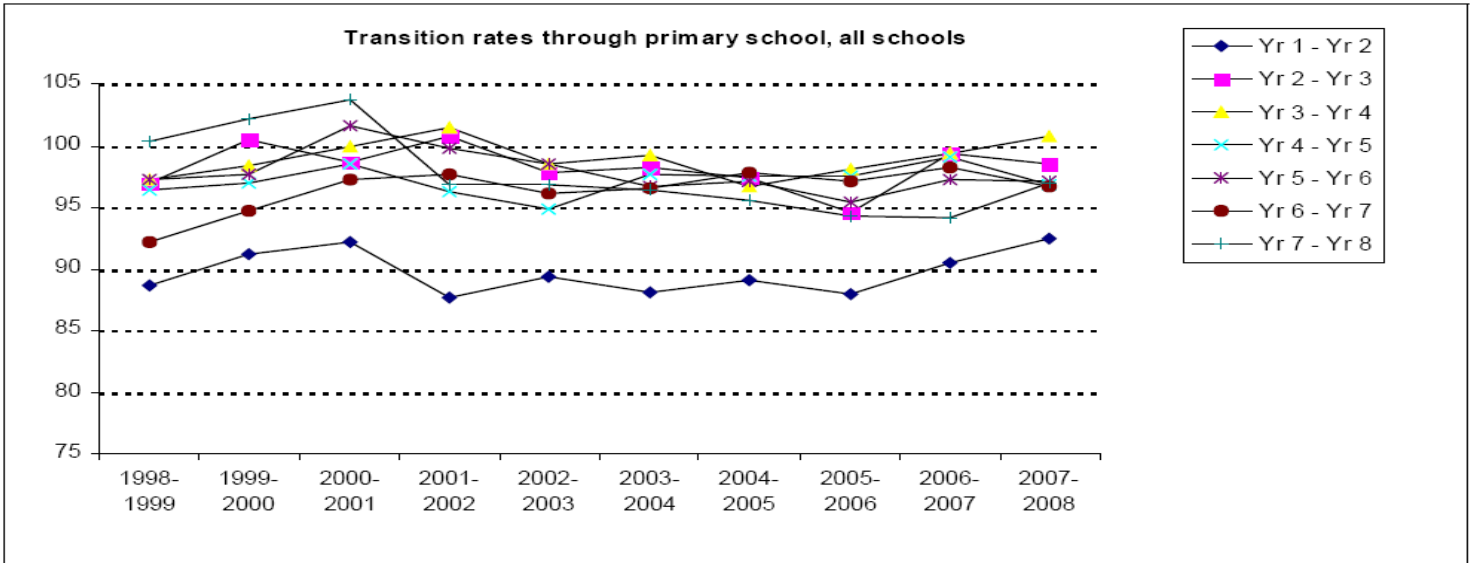
**Percentage of repeaters in all schools by level**

Year	Primary									Secondary						TOTAL
	1	2	3	4	5	6	7	8	Total	9	10	11	12	13	Total	
1999	2.8	0.7	0.4	0.6	0.5	0.4	0.4	4.4	1.3	0.5	0.4	6.0	6.0	2.9	3.0	1.8
2000	2.3	1.0	0.7	0.5	0.5	0.8	0.9	4.6	1.4	0.2	0.4	3.8	4.9	3.6	2.2	1.6
2001	2.4	0.7	0.4	0.6	0.6	0.3	0.8	2.8	1.1	0.4	0.4	4.0	4.4	5.6	2.4	1.5
2002	5.1	1.7	1.3	1.7	1.4	1.0	1.3	4.4	2.3	0.5	0.4	3.0	9.1	7.9	3.5	2.6
2003	5.9	1.3	1.1	1.3	0.8	1.3	1.0	3.7	2.1	0.5	0.2	4.6	9.7	8.8	4.0	2.6
2004	4.1	1.3	0.9	1.1	1.2	0.9	0.7	3.4	1.7	0.2	1.0	3.6	12.0	5.5	4.0	2.3
2005	4.1	1.0	0.7	0.8	0.7	0.5	0.9	2.3	1.4	0.8	0.8	3.0	8.8	9.3	3.8	2.0
2006	3.8	1.0	0.9	0.9	0.6	0.5	0.6	2.9	1.4	0.6	0.7	6.1	7.0	6.8	3.6	2.0
2007	3.9	0.8	0.5	1.1	0.3	0.6	0.9	1.5	1.2	1.1	0.3	3.6	8.4	7.0	3.5	1.8
2008	2.4	0.9	0.8	1.3	0.5	1.0	0.8	1.3	1.1	0.6	0.7	3.7	6.5	6.6	3.0	1.6



**Transition rates by year level**

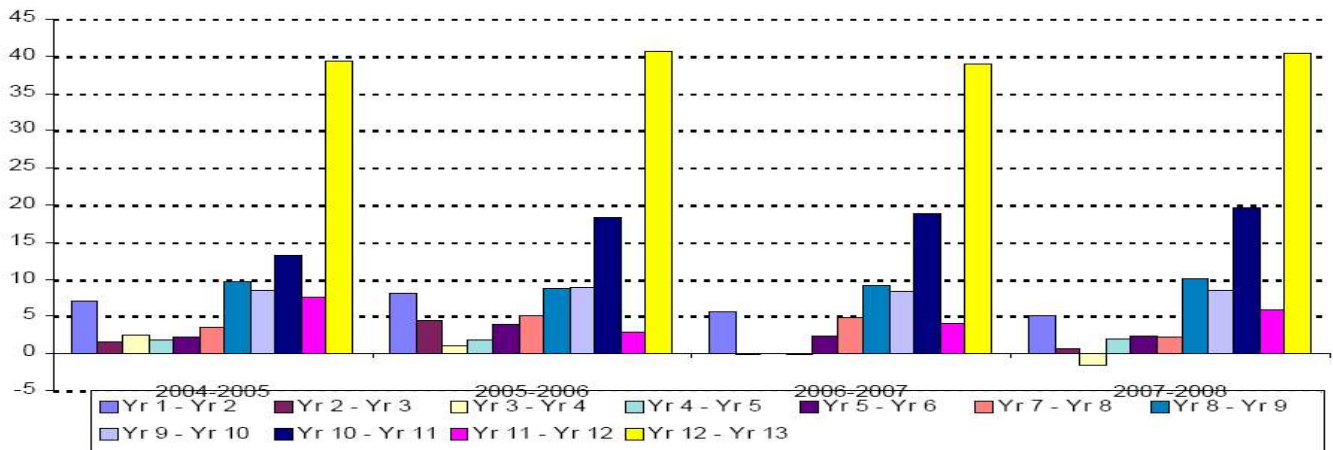
Year	Year Levels											
	1-2	2-3	3-4	4-5	5-6	6-7	7-8	8-9	9-10	10-11	11-12	12-13
1998-1999	89	97	97	96	97	92	100	80	93	92	77	52
1999-2000	91	100	98	97	98	95	102	84	90	87	79	48
2000-2001	92	99	100	98	102	97	104	86	90	86	86	52
2001-2002	88	101	101	96	100	98	97	86	91	85	91	51
2002-2003	89	98	99	95	99	96	97	87	96	88	91	52
2003-2004	88	98	99	98	97	97	96	87	89	85	82	57
2004-2005	89	97	97	97	97	98	96	88	91	86	90	51
2005-2006	88	95	98	97	95	97	94	88	90	81	91	53
2006-2007	90	99	99	99	97	98	94	89	90	81	92	53
2007-2008	92	98	101	97	97	97	97	89	91	80	90	53



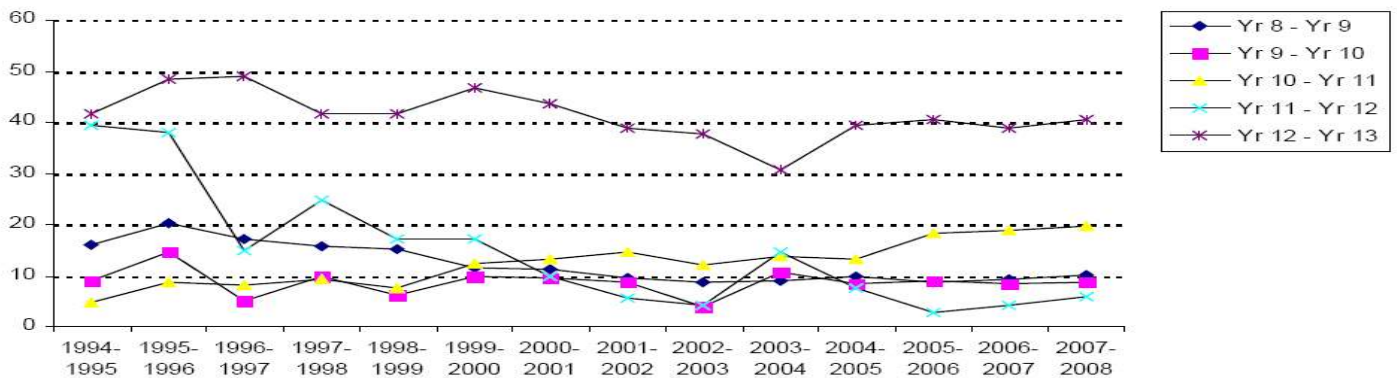
**Dropout rates (percentage) by year level**

Year	Year Levels											
	1-2	2-3	3-4	4-5	5-6	6-7	7-8	8-9	9-10	10-11	11-12	12-13
1994-1995	6	0	-1	1	-2	2	-2	16	9	5	39	42
1995-1996	9	1	0	3	5	4	-2	20	15	9	38	49
1996-1997	10	2	1	2	2	2	-5	17	5	8	15	49
1997-1998	9	1	0	5	1	5	-1	16	10	9	25	42
1998-1999	8	2	2	3	2	7	-1	15	6	8	17	42
1999-2000	6	-1	1	3	2	5	-3	11	10	12	17	47
2000-2001	5	1	0	1	-2	2	-5	11	10	13	10	44
2001-2002	7	-3	-3	2	-1	1	2	10	9	15	6	39
2002-2003	5	1	0	4	1	3	2	9	4	12	4	38
2003-2004	8	0	0	1	2	3	3	9	11	14	15	31
2004-2005	7	2	3	2	2	2	4	10	9	13	8	39
2005-2006	8	4	1	2	4	2	5	9	9	18	3	41
2006-2007	6	0	0	0	2	1	5	9	8	19	4	39
2007-2008	5	1	-2	2	2	2	2	10	9	20	6	40

**Dropout rates (percentage), all schools**



**Dropout rates (percentage) through secondary school, all schools**

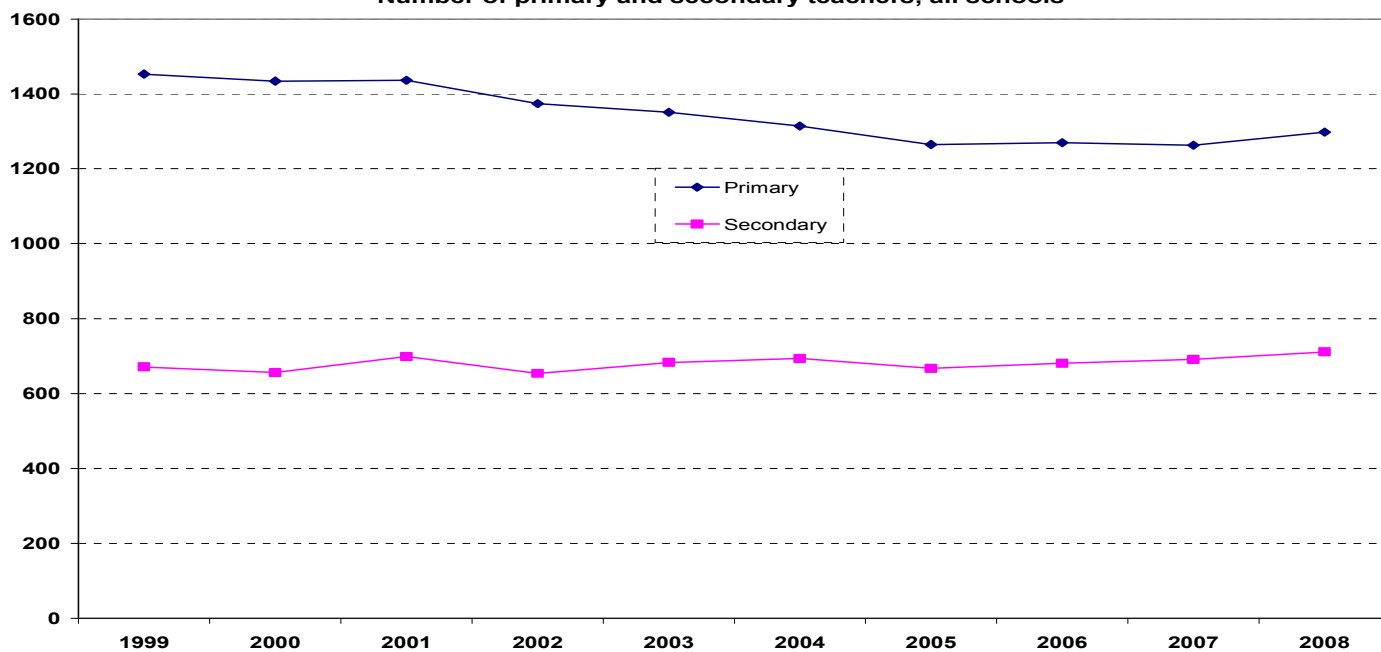




**Number of teachers by school type and district, 2008**

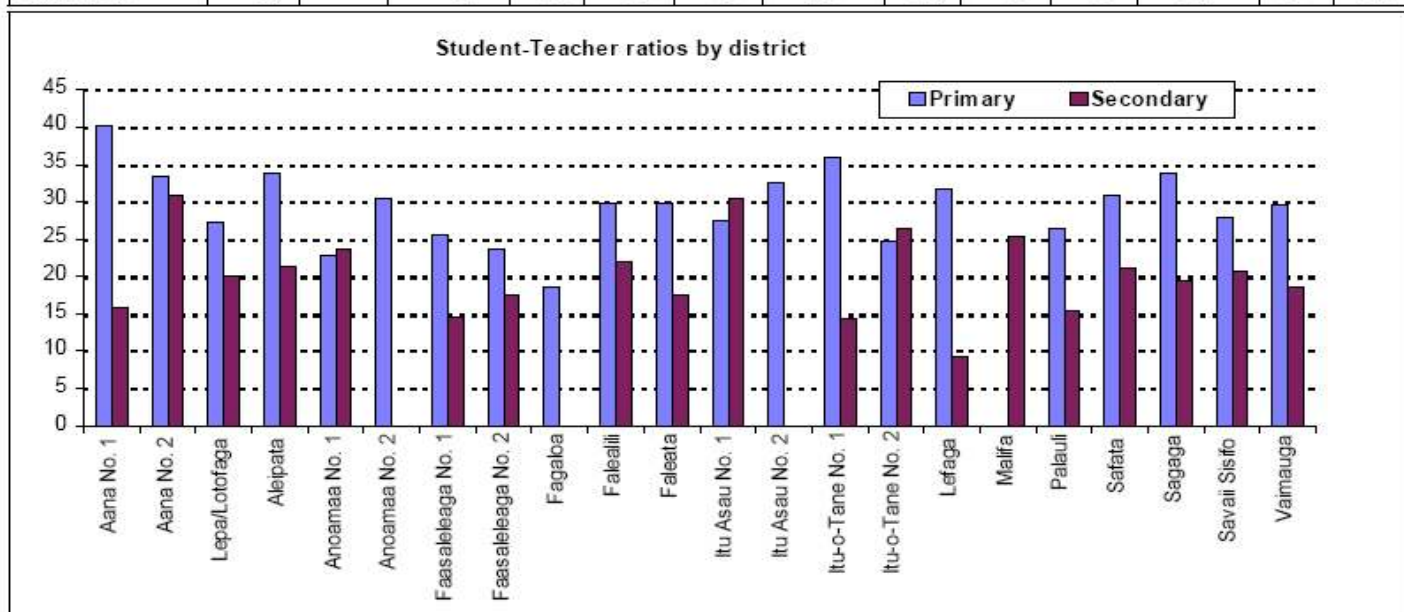
Region/District	Government				Mission				Private				TOTAL
	Primary	Pri-Sec	Second.	Total	Primary	Pri-Sec	Second.	Total	Primary	Pri-Sec	Second.	Total	
<b>Apia Urban</b>													
Faleata	132		24	156	11	45	67	123	51	36	7	94	373
Malifa			46	46									46
Vaimauga	153		114	267	65	21	46	132	31			31	430
Apia Urban Total	285		184	469	76	66	113	255	82	36	7	125	849
<b>Rest of Upolu</b>													
Aana No. 1	53		16	69	12	14	16	42					111
Aana No. 2	52		16	68									68
Aleipata	30		13	43									43
Anoamaa No. 1	25		17	42									42
Anoamaa No. 2	26			26	16			16					42
Fagaloa	12			12									12
Falealili	49		28	77									77
Lefaga	20		11	31									31
Lepa/Lotofaga	28		13	41									41
Safata	45		12	57									57
Sagaga	66		17	83	37		59	96					179
Rest of Upolu Total	406		143	549	65	14	75	154					703
<b>Savaii</b>													
Faasaleleaga No. 1	65		17	82	18		24	42					124
Faasaleleaga No. 2	39		20	59	6	22		28					87
Itu Asau No. 1	30		13	43									43
Itu Asau No. 2	23			23									23
Itu-o-Tane No. 1	25		34	59									59
Itu-o-Tane No. 2	42		13	55									55
Palauli	74		19	93			25	25					118
Savaii Sisifo	62		24	86									86
Savaii Total	360		140	500	24	22	49	95					595
Grand Total	1051		467	1518	165	102	237	504	82	36	7	125	2147

**Number of primary and secondary teachers, all schools**



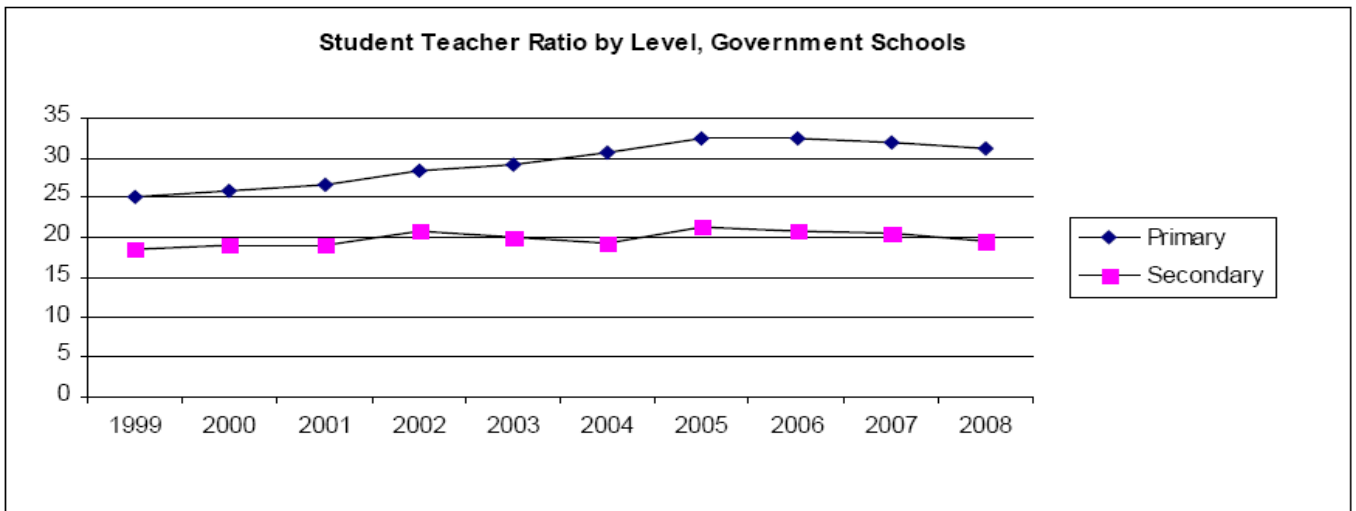
Student-Teacher ratios by school type and district, 2008

Region/District	Government				Mission				Private				Total
	Primary	Pri-Sec	Secondary	Total	Primary	Pri-Sec	Secondary	Total	Primary	Pri-Sec	Secondary	Total	
<b>Apia Urban</b>													
Faleata	34		19	32	25	17	22	21	20	6.5	24	15	24
Malifa			25	25									25
Vaimauga	32		17	26	29	23	20	25	17			17	25
Apia Urban Total	33		19	28	28	19	21	23	19	6.5	24	15	25
<b>Rest of Upolu</b>													
Aana No. 1	44		10	37	21	14	23	19					30
Aana No. 2	33		31	33									33
Aleipata	34		21	30									30
Anoamaa No. 1	23		24	23									23
Anoamaa No. 2	30			30	30			30					30
Fagaloa	19			19									19
Falealili	30		22	27									27
Lefaga	32		9.5	24									24
Lepa/Lotofaga	27		20	25									25
Safata	31		21	29									29
Sagaga	40		11	34	24		22	23					28
Rest of Upolu Total	33		19	30	25	14	22	23					28
<b>Savaii</b>													
Faasaleleaga No. 1	27		21	26	20		10	14					22
Faasaleleaga No. 2	24		20	22	21	16		17					21
Itu Asau No. 1	27		30	28									28
Itu Asau No. 2	33			33									33
Itu-o-Tane No. 1	36		14	24									24
Itu-o-Tane No. 2	25		27	25									25
Palauli	27		18	25			14	14					22
Savaii Sisifo	28		21	26									26
Savaii Total	28		20	25	20	16	12	15					24
Grand Total	31		20	28	26	18	20	21	19	6.5	24	15	25



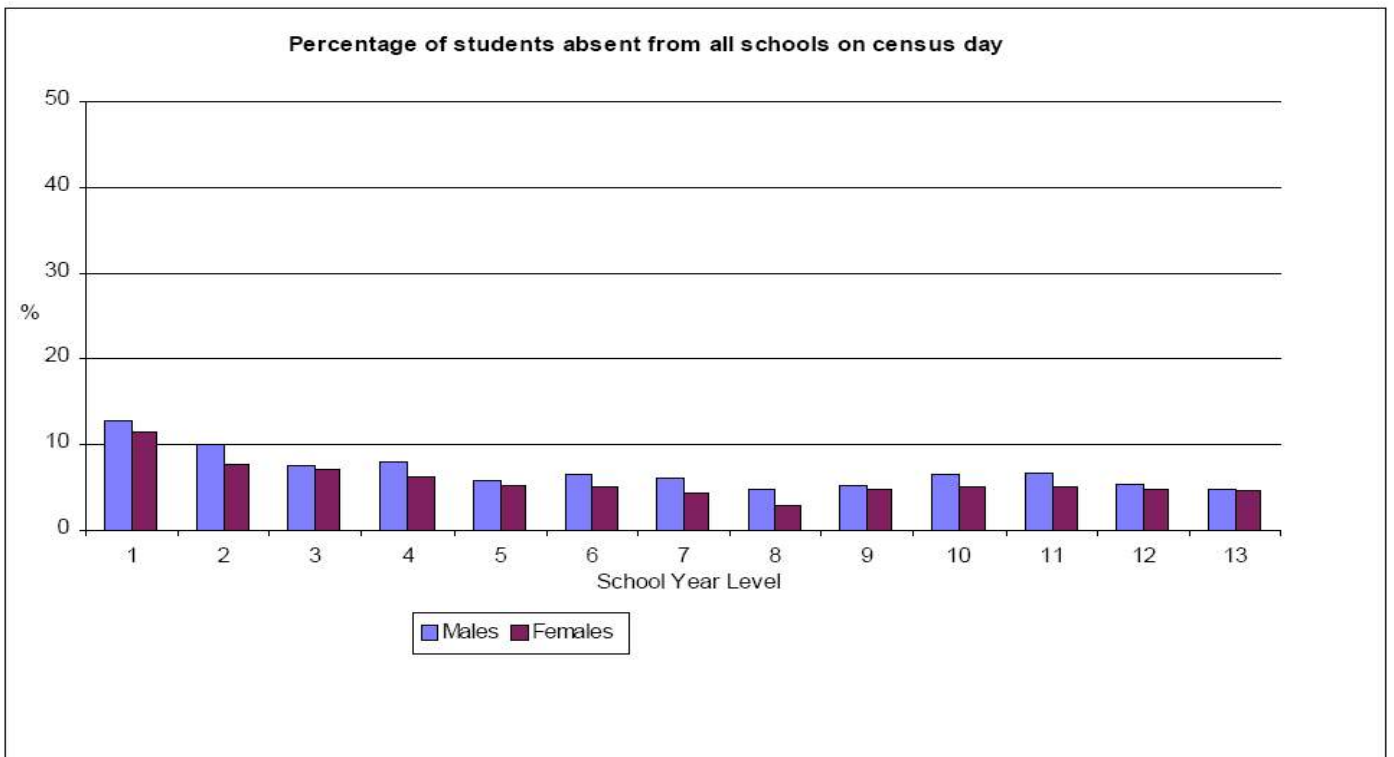
**Student Teacher Ratio by Level, Government Schools**

Level	Primary Student Teacher Ratio	Secondary Student Teacher Ratio
1999	25.0	18.6
2000	25.9	19.1
2001	26.7	19.1
2002	28.4	20.8
2003	29.2	20.1
2004	30.8	19.3
2005	32.5	21.3
2006	32.5	20.7
2007	32.0	20.4
2008	31.3	19.6



**Number of students absent of Census Day**

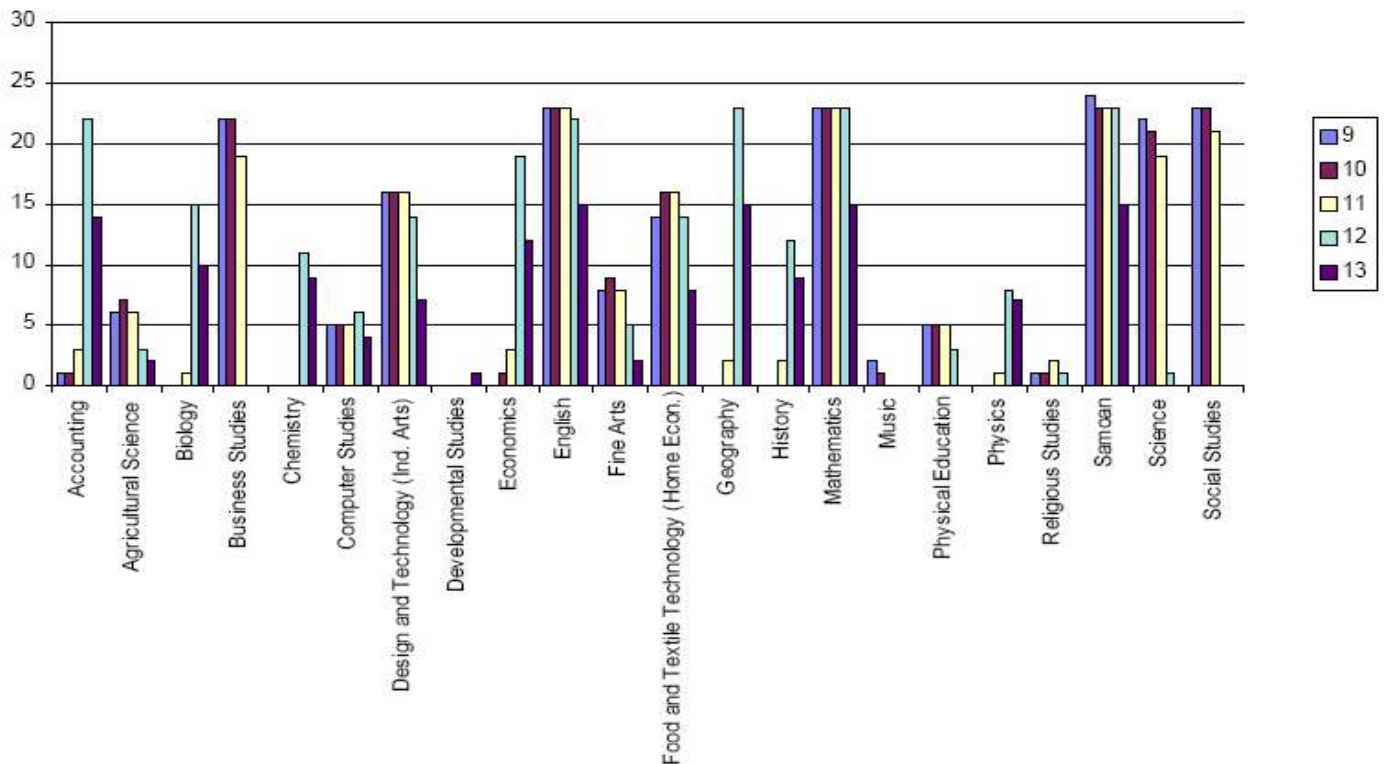
Level	Student Enrolments			No. of students absent			% Absentees		
	Males	Females	Total	Males	Females	Total	Males	Females	Total
1	2,748	2,491	5,239	351	287	638	12.8	11.5	12.2
2	2,556	2,363	4,919	255	184	439	10.0	7.8	8.9
3	2,450	2,445	4,895	187	172	359	7.6	7.0	7.3
4	2,571	2,384	4,955	207	151	358	8.1	6.3	7.2
5	2,506	2,283	4,789	147	121	268	5.9	5.3	5.6
6	2,596	2,373	4,969	171	121	292	6.6	5.1	5.9
7	2,531	2,375	4,906	154	103	257	6.1	4.3	5.2
8	2,375	2,329	4,704	114	67	181	4.8	2.9	3.8
9	2,024	2,076	4,100	105	98	203	5.2	4.7	5.0
10	1,797	1,887	3,684	117	94	211	6.5	5.0	5.7
11	1,373	1,646	3,019	92	83	175	6.7	5.0	5.8
12	1,387	1,476	2,863	76	72	148	5.5	4.9	5.2
13	719	938	1,657	35	43	78	4.9	4.6	4.7



**Number of Government Secondary Schools Teaching Curriculum Subjects by Level**

Subject	School Year Level					Total
	9	10	11	12	13	
Accounting	1	1	3	22	14	22
Agricultural Science	6	7	6	3	2	7
Biology			1	15	10	15
Business Studies	22	22	19			22
Chemistry				11	9	11
Computer Studies	5	5	5	6	4	6
Design and Technology (Ind. Arts)	16	16	16	14	7	16
Developmental Studies					1	1
Economics		1	3	19	12	19
English	23	23	23	22	15	23
Fine Arts	8	9	8	5	2	9
Food and Textile Technology (Home Econ.)	14	16	16	14	8	16
Geography			2	23	15	23
History			2	12	9	12
Mathematics	23	23	23	23	15	23
Music	2	1				2
Physical Education	5	5	5	3		5
Physics			1	8	7	8
Religious Studies	1	1	2	1		2
Samoaan	24	23	23	23	15	24
Science	22	21	19	1		22
Social Studies	23	23	21			23

**Number of Government Schools teaching curriculum subjects**



**Primary school facilities by Controlling Authority, 2008**

Controlling Authority	Facilities							
	Enrolment	Classrooms	Student Desks	Student Chairs	Computers	TVs	Telephones	Photocopiers
Baptist	383	30	564	564	12	1	5	2
Catholic	3,234	85	3,542	3,513	38	7	8	7
Government	32,662	1,389	24,374	22,491	154	23	66	41
L.D.S.	225	36	951	952	19	6	6	3
Methodist	331	12	370	370	23	1	1	1
Peace Chapel	464	22	398	462	4	1	3	2
S.D.A.	83	13	399	401	4	0	2	1
School Board/Com	1,317	47	1,471	1,454	24	4	14	10
<b>Total</b>	<b>38,699</b>	<b>1,634</b>	<b>32,069</b>	<b>30,207</b>	<b>278</b>	<b>43</b>	<b>105</b>	<b>67</b>

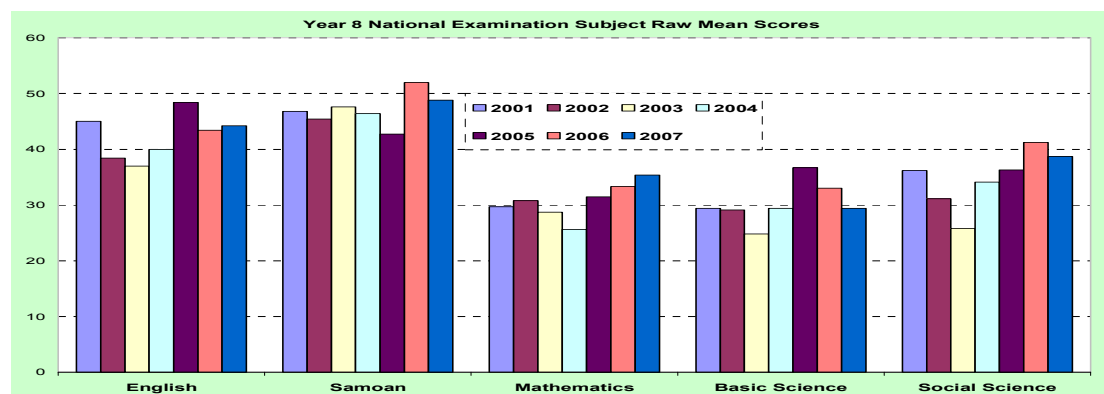
**Secondary school facilities by Controlling Authority, 2008**

Controlling Authority	Facilities							
	Enrolment	Classrooms	Student Desks	Student Chairs	Computers	TVs	Telephones	Photocopiers
C.C.C.S.	2,186	71	2,808	3,060	45	2	7	6
Catholic	1,706	78	2,516	2,593	165	7	13	8
Government	8,679	287	6,976	6,790	169	29	23	19
L.D.S.	1,582	70	1,294	2,079	135	26	14	6
Methodist	966	42	1,287	578	42	3	4	3
S.D.A.	479	23	325	329	38	1	5	2
School Board/Com	402	12	421	414	23	1	5	2
<b>Total</b>	<b>16,000</b>	<b>583</b>	<b>15,627</b>	<b>15,843</b>	<b>617</b>	<b>69</b>	<b>71</b>	<b>46</b>

*Part 2 – Data from Sources other than  
School Census Information System*

<sup>1</sup> Average raw score at National Yr. 8 Examinations  
All (Government and Non Government) for Core Subjects

Subject	2001	2002	2003	2004	2005	2006	2007
English	45	38	37	40	48	43	44
Samoan	47	45	48	46	43	52	49
Mathematics	30	31	29	26	32	33	35
Basic Science	29	29	25	29	37	33	29
Social Science	36	31	26	34	36	41	39

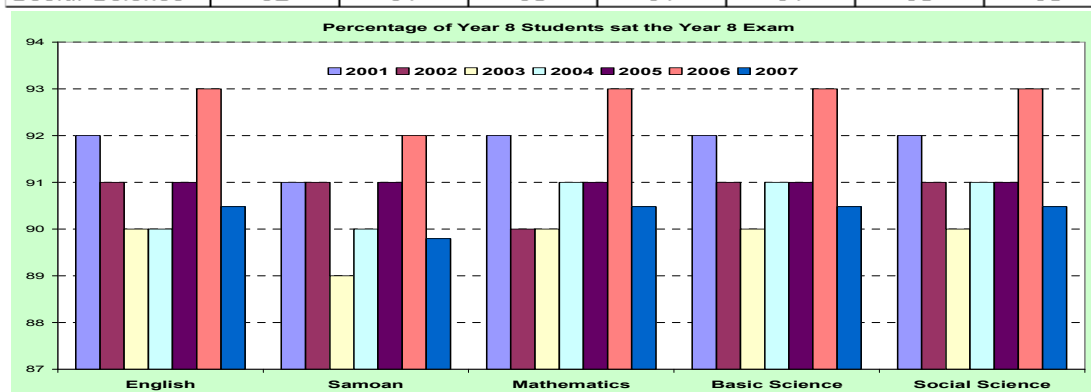


Number of Students sitting Yr. 8 National Examinations

Subject	2001	2002	2003	2004	2005	2006	2007
English	3971	3850	3816	3961	4122	4171	4256
Samoan	3930	3854	3789	3929	4110	4123	4224
Mathematics	3977	3831	3816	3964	4122	4171	4256
Basic Science	3972	3854	3816	3965	4121	4171	4256
Social Science	3971	3849	3816	3966	4121	4171	4256

Percentage of Yr.8 Students<sup>2</sup> that sat the Yr.8 National Examination  
All Students (Government and Non-Government)

Subject	2001	2002	2003	2004	2005	2006	2007
English	92	91	90	90	91	93	90
Samoan	91	91	89	90	91	92	90
Mathematics	92	90	90	91	91	93	90
Basic Science	92	91	90	91	91	93	90
Social Science	92	91	90	91	91	93	90



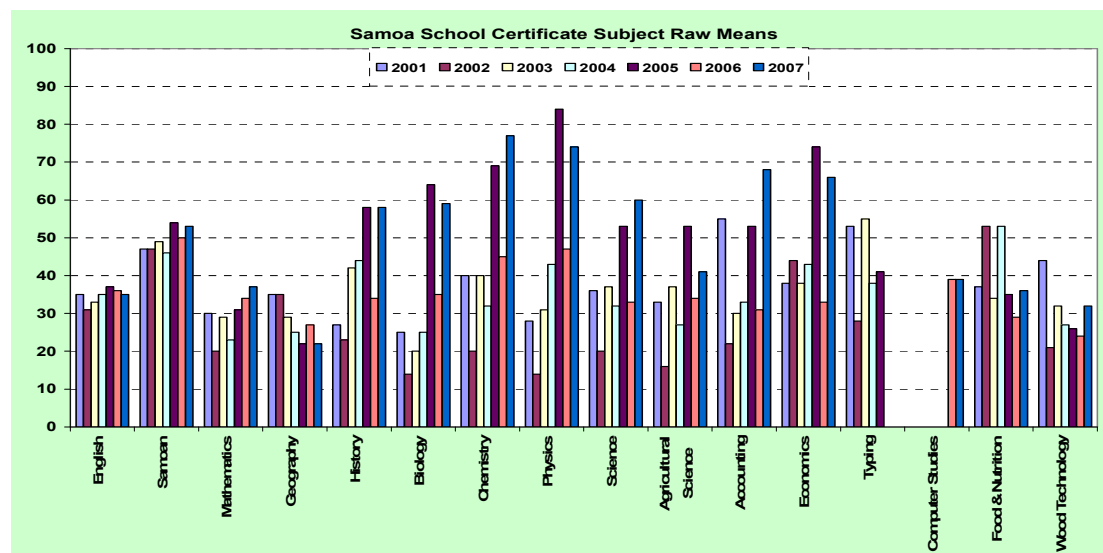
<sup>1</sup> Data at this stage is not available disaggregated by gender, location etc. (This is required to calculate performance measures 1.2, 1.4 of the Performance Framework)

<sup>2</sup> The percentage of year 8 students sitting year 8 exams is a measure of year 8 completion rate.



**Average Raw Score at National Year 12 Examinations  
All (Government and Non Government) for Core Subjects<sup>3</sup>**

Subjects	2001	2002	2003	2004	2005	2006	2007	Student sitting exam 2007
English	35	31	33	35	37	36	35	2228
Samoan	47	47	49	46	54	50	53	1646
Mathematics	30	20	29	23	31	34	37	1939
Geography	35	35	29	25	22	27	22	941
History	27	23	42	44	58	34	58	590
Biology	25	14	20	25	64	35	59	393
Chemistry	40	20	40	32	69	45	77	256
Physics	28	14	31	43	84	47	74	221
Science	36	20	37	32	53	33	60	44
Agricultural Science	33	16	37	27	53	34	41	110
Accounting	55	22	30	33	53	31	68	605
Economics	38	44	38	43	74	33	66	673
Typing	53	28	55	38	41			
Computer Studies						39	39	530
Food & Nutrition	37	53	34	53	35	29	36	205
Wood Technology	44	21	32	27	26	24	32	137



**Number of Students<sup>4</sup> sitting National Year 12 Examination  
All (Government and Non Government)**

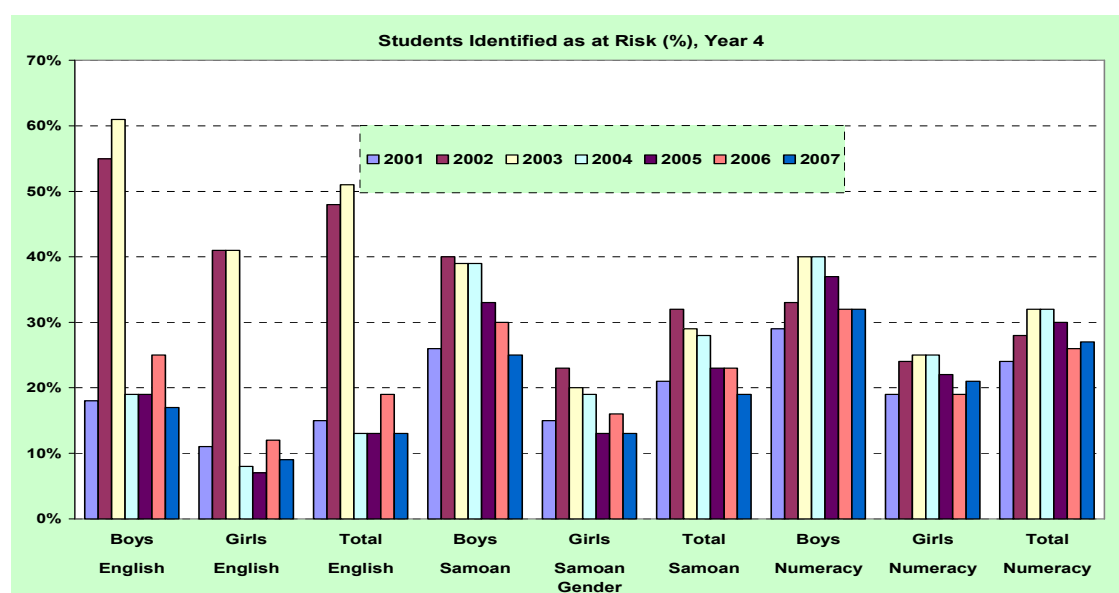
Number of students	2005	2006	2007
Sat National Year 12 Exam	2582	2343	2228
Enrolment in Year 12 (School Census)	3101	2916	2909
Percentage of Year 12 Students that sat the Year 12 Exam	83%	80%	77%

<sup>3</sup> Data at this stage is not available disaggregated by gender, location (1.2, 1.4 of the Performance Framework).

<sup>4</sup> Total number of students who sat any one of the year 12 exams. Note that no subjects are compulsory at year 12, however most students undertake English, Samoan and Mathematics. However, individual schools may have a policy of some subjects being compulsory.

**Primary Students Identified as at Risk<sup>5</sup>, Year 4, All Schools (Government and Non- Government)  
Results from SPELL One Test**

Subjects	Gender	2001	2002	2003	2004	2005	2006	2007
English	Boys	18%	55%	61%	19%	19%	25%	17%
English	Girls	11%	41%	41%	8%	7%	12%	9%
English	Total	15%	48%	51%	13%	13%	19%	13%
Samoan	Boys	26%	40%	39%	39%	33%	30%	25%
Samoan	Girls	15%	23%	20%	19%	13%	16%	13%
Samoan	Total	21%	32%	29%	28%	23%	23%	19%
Numeracy	Boys	29%	33%	40%	40%	37%	32%	32%
Numeracy	Girls	19%	24%	25%	25%	22%	19%	21%
Numeracy	Total	24%	28%	32%	32%	30%	26%	27%

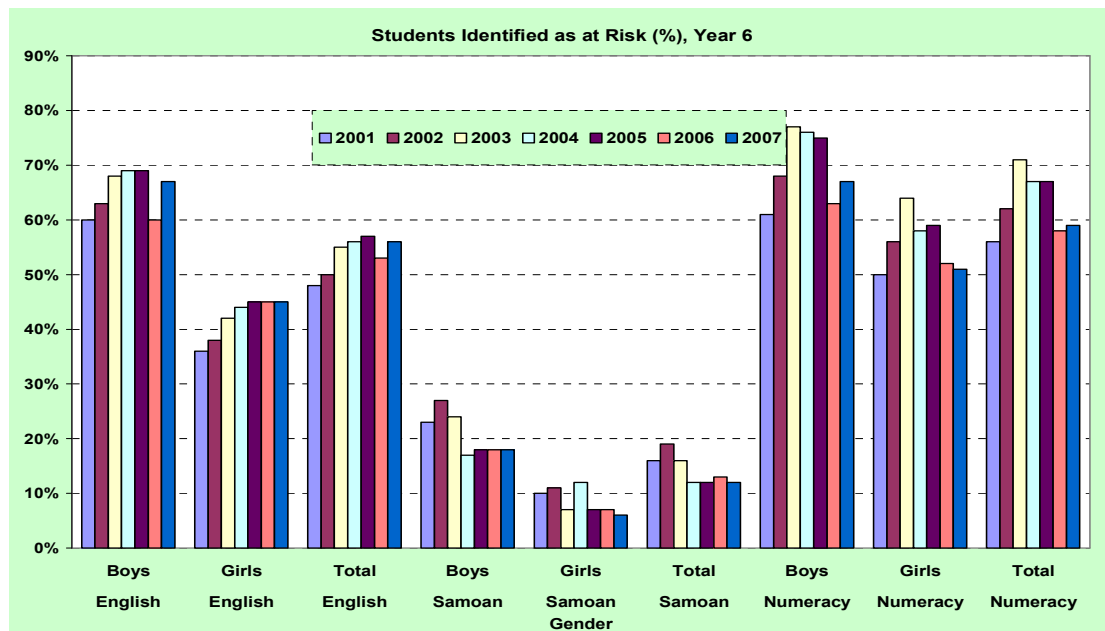


<sup>5</sup> A test taken by all year 4 students in Government schools. Most non-Government schools also participate, but it is not compulsory. It provides an indication of the students whose learning outcomes are identified as being at risk so that they receive attention from teachers in their reading and numeracy programmes.

**Primary Students identified as at Risk<sup>6</sup>, Year 6, Government Schools**

**Results from SPELL Two Test**

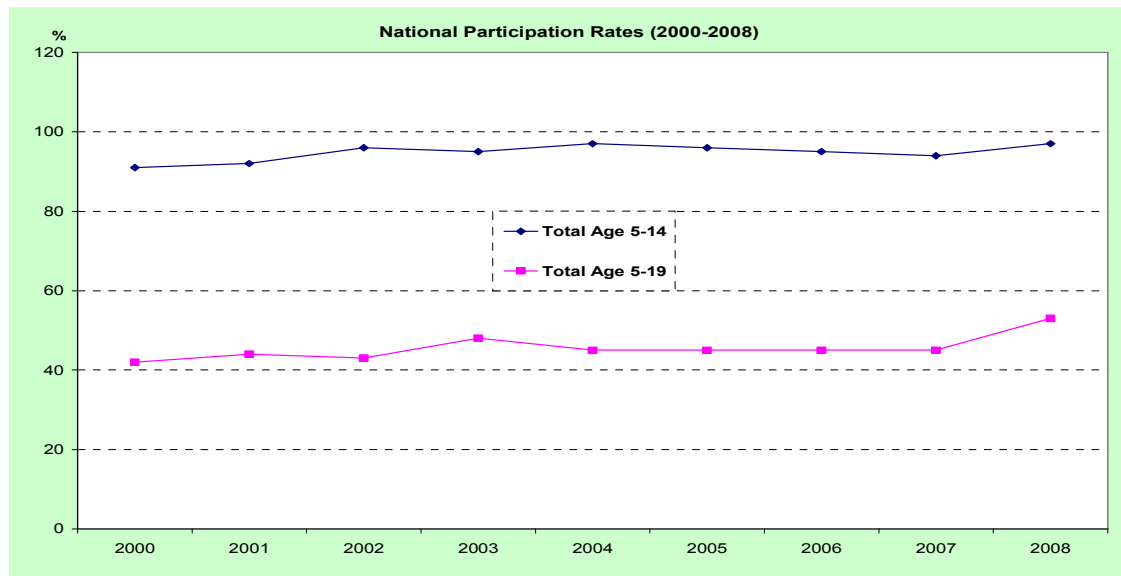
Subjects	Gender	2001	2002	2003	2004	2005	2006	2007
English	Boys	60%	63%	68%	69%	69%	60%	67%
English	Girls	36%	38%	42%	44%	45%	45%	45%
English	Total	48%	50%	55%	56%	57%	53%	56%
Samoan	Boys	23%	27%	24%	17%	18%	18%	18%
Samoan	Girls	10%	11%	7%	12%	7%	7%	6%
Samoan	Total	16%	19%	16%	12%	12%	13%	12%
Numeracy	Boys	61%	68%	77%	76%	75%	63%	67%
Numeracy	Girls	50%	56%	64%	58%	59%	52%	51%
Numeracy	Total	56%	62%	71%	67%	67%	58%	59%



<sup>6</sup> A test taken by all year 6 students in Government schools. Most non-Government schools also participate, but it is not compulsory. It provides an indication of the students whose learning outcomes are identified as being at risk so that they receive attention from teachers in their reading and numeracy programmes.

**National Participation Rate**

Year	2000	2001	2002	2003	2004	2005	2006	2007	2008
Male Age 5-14	89	92	96	95	97	96	95	94	94
Female Age 5-14	92	93	96	95	96	95	95	95	99
Total Age 5-14	91	92	96	95	97	96	95	94	97
Male Age 15-19	40	42	39	44	42	42	41	42	49
Female Age 15-19	44	47	46	53	49	49	48	49	57
Total Age 5-19	42	44	43	48	45	45	45	45	53



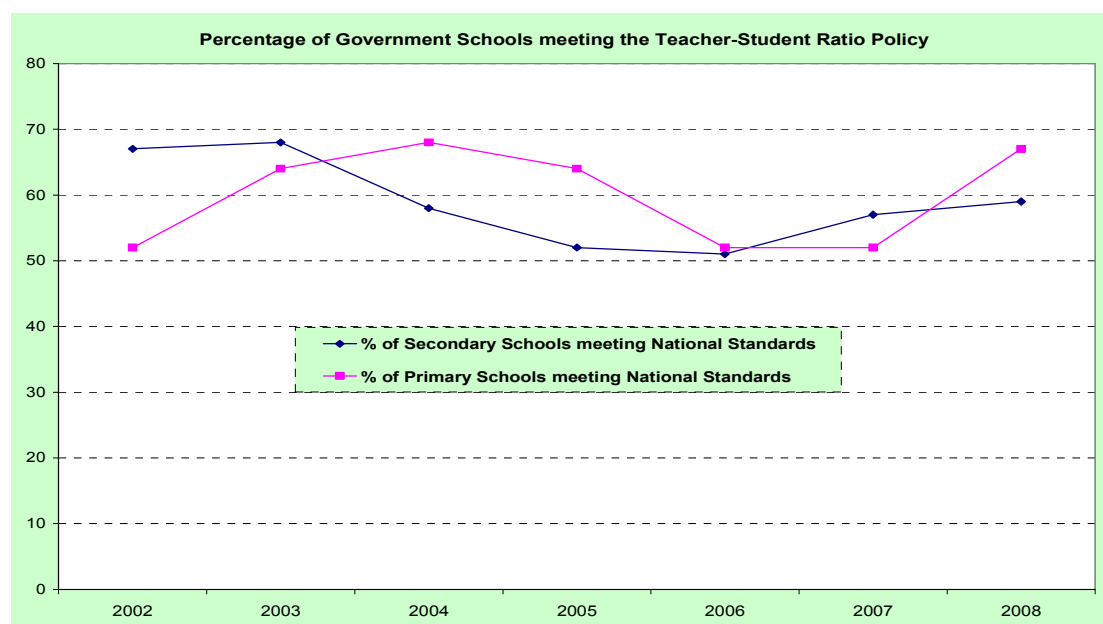
Source: Population estimates were provided by the Statistical Services Division of the Ministry of Finance and UNESCO

**Number of Government Schools that are meeting the National Standards for Primary Students – Teacher Ratio of 1 Teacher to 30 Students (1:30)**

Year	No. of primary schools meeting National Standard Ratios (1:30)	No. of primary schools above National Standard Ratios (1:30)	% of primary schools meeting National Standard Ratios (1:30)
2002	96	47	67
2003	96	45	68
2004	82	59	58
2005	73	68	52
2006	72	69	51
2007	80	61	57
2008	83	57	59

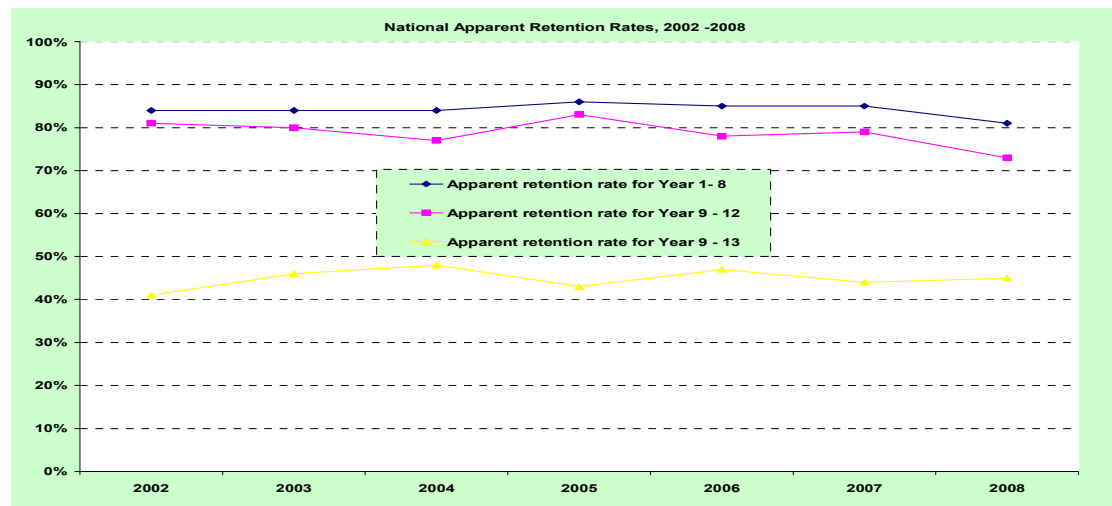
**Number of Government Schools that are meeting the National Standards for Secondary Students – Teacher Ratio of 1 Teacher to 20 Students (1:20)**

Year	No. of secondary schools meeting National Standard Ratios (1:20)	No. of secondary schools above National Standard Ratios (1:20)	% of secondary schools meeting National Standard Ratios (1:20)
2002	13	12	52
2003	16	9	64
2004	17	8	68
2005	16	9	64
2006	13	12	52
2007	13	12	52
2008	16	8	67



**Apparent retention rate<sup>7</sup> for All Schools**

Year Level	2002	2003	2004	2005	2006	2007	2008
Apparent Retention Rate for Years 1-8	84%	84%	84%	86%	85%	85%	81%
Apparent Retention Rate for Years 9-12	81%	80%	77%	83%	78%	79%	73%
Apparent Retention Rate for Years 9-13	41%	46%	48%	43%	47%	44%	45%



**Students commencing First Year of Tertiary Studies<sup>8</sup>**

Year	Institute of Higher Education (IHE)	Institute of Technology (IOT)	University of the South Pacific (USP)	Total
2003	370	311	Not Available	681
2004	411	382	Not Available	793
2005	444	381	Not Available	825
2006	557	353	Not Available	910
2007	529	384	Not Available	913
2008	456	438	Not Available	894

**Transition Rate<sup>9</sup> from Year 13 to identified Tertiary Education**

Year	Enrolment in Year 13	Total Tertiary Enrolment	Transition Rate from Year 13 to Tertiary
2003	1616	681	48
2004	1752	793	49
2005	1584	825	47
2006	1756	910	57
2007	1652	913	52
2008	1657	894	54

<sup>7</sup> Apparent Retention Rate compares the number of students in a given year with the size of the cohort some years ago. For example, the apparent retention rate of Year 9-12 for 2008 is calculated as the number of students in year 12 in 2008 divided by the number of students who were in Year 9 in 2005.

<sup>8</sup> Students commencing at USP are not included.

<sup>9</sup> Transition rate into Post School Education is the number of students who commenced post-school education in 2008 (Institute of Higher Education, Institute of Technology) as a percentage of the students who were in Year 13 in 2007. Students commencing at USP are not included.



