

HAWAIIAN REMAINS

on the

SHOREWARD FLAT of KAAWALOA and KEOPUKA

Districts of South Kona

This area is basically pahoehoe with several tongues of aa extending across it. Most of the remains are found upon the pahoehoe. The cracks and small natural pits in the pahoehoe appear to have been utilized and enlarged by the Hawaiians, and pits sunk among the fragments of rock, for use in agriculture. Several now bear noni trees, and probably sweet potatoes and other plants were also raised on a rather large scale in them. Many have the form of an inverted pyramid about 6'x6'x2-3'. They are thickest in Kaawaloa, on the tongue back of the Lighthouse, but they extend wherever there is pahoehoe, along the southern shore of Keopuka and even on the great flat back of Keawekahaka Point. In all there must be over 2000.

Many of the crevices and pits in the Pahoehoe have been roughly filled in with fragments of stone, in some instances apparently to level the ground about dwellings. Some of these fills are very confusing, as they resemble on the one hand platforms and on the other natural heaps of debris. *also plain*

The dwelling sites and other remains of these two districts may be divided into two groups, that on the Kaawaloa-Keopuka flat, and the small village chiefly on the aa flow just south of the Onouli stone wall, with a long uneven connecting chain of ruins across Keawekahaka flat. This flat seems to have been used for agriculture much more than for habitation. The larger group in turn divides into two villages, one fronting on Kealakekua Bay, toward which most of the houses faced, the other fronting the shoreline which extends northwestward from the Lighthouse; the heiau on the point (so-called "Cook Point") at the entrance to the bay being the hinge on which the two villages swing.

The village facing the Bay was the last to be inhabited, and many of the house sites are thoroughly modern; the sites past the Lighthouse are not likely to have been inhabited within the past fifty or seventy-five years.

The location of the village facing the Bay shows clearly the attraction of a fairly good water supply on this barren shore: the pool Haliilua was kapu-ed for chiefly used, but the whole shore at the foot of the Pali oozes brackish water; about Haliilua were two wells, and one spring on land and several at high tide mark. There is a poor well near the landing, a spring and two swampy water holes between the landing and the heiau on the point. On the Keopuka side was one well, which doubtless was insufficient. Some brackish water must have been carried over from the Bay side. At the northern village, the presence of the modern well shows that a small supply of brackish water must have been available.

Facing the Bay, it is easy to launch canoes. Along the Kaawaloa-Keopuka stretch the cliff is 15-20' high, and the water rough. The advantages of fishing and the coconut grove which must then have occupied this strip drew a large population; also the chiefs doubtless occupied the most desirable land fronting the Bay.

The most conspicuous remains in this section are easily the two government roads, the one to Keauhou and the one climbing the cliff to the main highway. Both have been repaired in modern times. The Keauhou Road across the flat varies in width from 12' to 16' besides a retaining layer of 2' to 3' on either side. This layer is

* Properly Kalaemamo.

capped by a row of large stones, wave-rounded pebbles or large blocks of pahoehoe, which were used as stopping-stones. The Captain Cook Trail, where it climbs the Pali, is retained by a well-built bank probably four feet or more in thickness, and as much as 25' high.

Much of the flat in Kaawalca is overgrown with cactus and brushwood, making investigation difficult. Of the old growth of trees there remain only one clump of cocopalms and the noni scattered throughout the whole pahoehoe and even in the aa.

At the present (1929) there reside in Kaawalca two families, one Japanese and one Hawaiian, neither kamaaina, and it is therefore hard to secure local traditions of the place. For example, no one knows for what the large platform, Site 57, was used.

Sites 1-79 are shown on a Territorial Survey blueprint, scale 1/1200, sites 80-142 and 161-178 on separate sketch maps drawn by the investigator, scale 1/1200 and sites 143-160 on the map of the whole district covered, scale 1/10,000.

ADDENDA

Site 1.

Dr. Albert S. Baker, in "Thrum's Annual" for 1921, p. 84, says: "Up from the shore a little and to the right of the main trail leading mauka, are the stone foundations and walls of the first mission station established here by Ely and Ruggles in 1824 and 1828. Maihe, husband of Kapiolani, was buried within the walls because of his aloha for the missionaries, after the station was moved across the bay." There is now no trace of his grave.

Site 14.

The spring, according to the same article, is "said to date from Umi's time, and always to have been tabu to common people."

Site 57.

From the same article: "A church site was levelled off across the trail, but left in outline as at this day." From the dimensions, Site 57 can be nothing else but this tentative church site.

SITES BETWEEN THE GOVERNMENT ROAD AND THE PALI:

Handwritten notes:
11/11/19
11/11/19
11/11/19
11/11/19

Site 1. Platform in front of ruined stone house, Halehuki. Platform 50'x52', height in front 3', along sides 3'-4'. In front there is a facing of large stones 50'x7', sloping down about one foot from the main platform; the rest of platform is paved neatly with small stones. Large stairway approach. The whole is in good repair and fairly recent. Behind house a pen, inside dimensions 12'x9'; the wall is 3' thick and 7' high on the makai side. Heaped rock in back of lot defines path around the house, and probably indicates old outhouse or shed site. (See Addenda)

Site 2. Elevated double platform. Length 47', width at N. end 42', at S. end 32'. Terrace averages 3' in height on N. and W., joins natural ridge on other sides. The lower level on the N. measures 14'x42' and is neatly paved with small stones. Second level is one foot higher, and not so neatly paved. On mauka side the platform rises in rude steps about 1-1/2' from terrace facing; this section measures 33'x4'. Large close-grained (pillow?) stone and part of poi pounder found here.

A pen, inside dimensions 6'x9' with 2' walls at N.E. corner, against facing.

Site 3. Platform of loose, rough, large stones, originally about 54'x22', now divided in two parts by path. Joins smooth ground on S. and may have been larger than at present. Facing 1-1/2' high on W. Size of tree growing from among the rocks indicates considerable age of ruin.

Site 4. Double platform. House platform on N. paved with small stones, adjoining yard platform on S. paved with loose rough stones. Total length 56'; house length 35', width 25'; yard length 21' width 18'. Facing on mauka and N. 2' high. Cooking place 6'x4' on house platform near S. end. A path of large, flat stones crosses house platform to a later privy.

Site 5. House platform, 38'x25'; door in middle of W. side; good foundation; floor of small and large stones mixed. In fair state of preservation.

Site 6. Two-level platform, first level 44'x38', facing 1'-2' high. Second level 8' from W. end and 4' from north side; 24'x12', height 6 inches. Both levels paved with small stones.

Site 7. Three-level platform. House platform, paved roughly, approximately 34'x21' height one foot. Porch platform makai, length 34', width 9'-11', height ~~one to one~~ one to one and one-half feet. Very rough, tapering platform below it, leading down to wall, with pathway of smooth stones laid across it later; 18' wide next second platform.

Site 8. Platform 58'x26', facing 2' high. Rough stone pavement. Large doorstone. Interval between platform and nearby walls partly filled up with loose stone. Occupied by modern house within past twenty years. Small pen on N.W.

Handwritten notes:
modern house, occupies area - double the original location to make lot behind old

- Site 9. Doubtful house site, flush with ground, of small stones; 6'x8'.
- Site 10. Area between two pens. House platform 20'x15' adjoins one pen; pavement of small stones; indistinct foundation; almost flush with ground. Nearby is circular pen, diameter 6' with walls 3'-4' thick. From Platform to the inner pen is covered by loosely piled rock, leaving free a space from house to spring.
- Site 11. Walled-up brackish spring.
- Site 12. Stagnant brackish pool, surrounded roughly by stones.
- Site 13. Walled enclosure with house platform. Walls are 2' thick and average 2' high, but are broken down. House platform 9'x15', one foot high; pavement of small stones. Rest of pen 9'x8'.
- Site 14. Brackish well, marked on U.S. Coast and Geodetic Survey chart (1928) as "Umi's well, but this name is unknown to Kona people. Depth 6' plus 1-1/2' water, width 6', length 10'; steps on W. see Adenda
- Site 15. Old platform with modern hut. Length over-all 28', width 28'. A layer of flat stones on the S., 28'x8', the rest small stone pavement. A very neatly paved platform 15'x12' is nearly covered by the hut. Very good thick foundation 1'-2' high. At this site a roughly hollowed, shallow mortar and a papamu chipped at one corner and with holes nearly effaced, apparently 9x9 holes. Dimensions 24"x18"x5".
- Site 16. A very old enclosure, 40'x34', sunk about one foot below surrounding ground, and surrounded on three sides by a low, broken-down wall. The talus inside is smoothed, but there is no indication of a house site.
- Site 17. Platform 30'x22'; good foundation; pavement of small stones. The back part is occupied by a pavement of very small stones, probably covered by hut, about 20'x22'.
- Site 18. Platform 16'x16'; indistinct foundation; pavement of small stones.
- Site 19. A very old enclosure about 40'x30'. The walls, of very small stones, are nearly flat with surrounding ground.
- Site 20. Structure indicated by two Hawaiians as a Heiau. It takes advantage of a slight ridge; the makai end is about 8' the lower. The pen is about 32'x42', with walls 3' thick and 3'-4' high. At the N.W. corner is a platform 12'x12'x1-1/2'. The large platform at the makai end averages 38' E. and W. and 42' N. and S.; it is 4' high at the lower end. Smooth, small rock pavement. Six feet from N. and E. sides is a fine fire pit, dimensions including carefully laid retaining layers of large stones, 12'x6'x2'.
The talus to S. and E. is somewhat smoothed and in one place even retained by a low wall now nearly ruined.
- Site 21. House platform about 32'x20'. Cannot be measured because of cactus.
- Site 22. Three small shelter caves, opening to the S.E. and with low walls in front.
- Site 23. Several smoothed places on the talus, which may have been occupied by shelters.

Site 24. A very old walled enclosure about 40'x15', at the foot of the steep talus.

Site 25. A series of three platforms all built on the same plan, and succeeding one another downhill at 5' intervals. The front terrace of each is about 2' high. Each pen is sunk about 2'.

Upper: total width, 23'; platform width 11'; pen walls about 3'; pen width about 7'.

Middle: total width, 16'; platform width 11'; pen walls about 3'; pen width about 5'.

Lower: total width, 14'; platform width 11'; pen walls about 2'; pen width about 8'.

The series is finished by a doubtful enclosure about 10'x10'.

Site 26. House site about 20'x29' including 2' walls on every side; surrounded by broken-down wall, foundation indistinct.

Site 27. Platform, 10'x11'x3'; solidly built. Contains a large, heavy, poorly grooved sinker stone.

Site 28. Platform, 16'x15'-18', with well-defined facing 1-1/2' high on E. Smooth paving of small stones. Slope back of this site is smoothed to an ill-defined sort of enclosure about 20'x20', overgrown with cactus.

Site 29. Half-natural platform, ill-defined at back, about 45'x20'; facing in front 4' high. Paved with small stones.

Site 30. Two platforms. The upper one about 32'x20', rough and broken down. Foundation, now almost flush with ground; the talus behind is smoothed. Below it is a roughly walled, very old enclosure containing a second platform, rough and broken down, about 13'x13', with large recent fireplace.

Site 31. Pens marked on map. Old and broken down.

Site 32. Platform, 24'x20'x1'. Well-defined and recent.

Site 33. Platform, old and dilapidated, about 22'x21'. Contains a more recent platform, slightly raised, 10'x10'. Below it there is a small cleared space in the corner of the lot, possibly used as a hut site.

Site 34. A sloping platform, faced on the s. side, running down from a small, partly natural pen.

Site 35. Two rows each of three pits. These shallow depressions in the aa and talus are partly natural, partly artificial and very roughly walled.

Site 36. A series of five platforms, all plainly joined except the one farthest mauka. Length over-all, 49'.

The first platform is 12'x12', with a 2' row of foundation between it and the next platform. Second platform 13'x10', backed by a pen walled on three sides, inside dimensions 11'x8'x2'. Passageway 8'x7' onto third house platform, 14'x12'. In front of this room a rough lanai platform about 18'x10', foundation about one foot high. Well defined foundations; pavements of small stones.

Site 37. Double platform 28'x23'. House proper probably on N., 23'x15'; lanai platform on S., 23'x13'. Faint foundation, about one foot high. Rather large stone pavement.

Site 38. House site, 21'x14'. Faint foundation, forming very dim ridge around floor of smooth talus.

Site 39. Walls. These, especially the one around the pen adjoining the large lot, are built of small stones, are old, and flattened into mounds. Possible house site makai of wall, on smooth talus.

Site 40. House platform covering natural knoll. Width N. and S. 14'; length E. and W. 23', plus a banking 3' wide on S. and W. Stands 3' above base of knoll. Distinct foundation; pavement of small stones.

Site 41. House platform 31x20', height of foundation about one foot. Small pavement. Sunken pen on N., with thick walls, inside dimensions (irregular) 12'x9'. Smoothed talus in N.E. of lot, but no house site.

Site 42. House platform 34'x24', height of foundation about one foot. Pavement of small stones. Three small pens near.

Site 43. Ruins in a lot, partly occupied by a small hut. The house platform is mostly modern and very complicated. The front is a platform 29'x20', gravelled except at S. end and for 5' along the front, where it is paved with flat stones. This platform is 2' high. The retaining wall is continued for 48' in all. The platform is continued N. by a rough, partly paved platform with a rude retaining wall.

Back of it is an old house site 25'x15' with foundation and firehole.

Back of the hut is another series of three platforms, each higher than the other, the lowest approximately 27'x16', upon which is superimposed a double platform, 10'x7' plus 6'. Rough platforms connect to walls S. and W.

Site 44. House platform 23'x17'to 23'. Height of foundation makai 2'. Paved smoothly with small stones. Rough fill between it and wall makai, forming two houseyards. Imu in corner of yard, next the wall.

Site 45. House platform 24'x18' within walls, but counting width of foundation on two sides.

Site 46. Platform set level with ground, 34'x30'. Plain foundation but very rough floor, with large rocks, sloping about 2-1/2' from S. W. to N.E. corner.

Site 47. Natural platform banked with retaining wall on mauka side, about 4' high. Platform paved about 40'x20', roughly. Does not appear to have been house platform.

SITES BETWEEN THE GOVERNMENT ROAD AND THE LIGHTHOUSE, FACING KEALAKEKUA BAY.

Site 48. House site, very ruinous, no foundation. Dimensions about 22'x22', but this is rough rock and the space occupied by the house must have been much smaller. In the center is a firepit about 2' in diameter and one foot deep, filled with caked ashes.

Site 49. House site. Platform of small stones, very ill-defined foundation, 8'x17'; fireplace in center. A tangle of large stones 4-5' wide on every side.

Site 50. House site about 20'x19', no foundation; small, rough stone floor.

Site 51. House site about 18'x18', no foundation; rough floor of large and small rocks and pahoehoe.

Site 52. House platform on natural shelf, 18'x16'x1/2'. Very small stone and pebble floor.

Site 53. House platform about 17' long with rough rock on either end. Merges on makai side into pahoehoe shelf, was probably about 10' wide. 2' high on mauka side. Small stones, rough. Small firepit.

Site 54. Dry well 12' deep.

Site 55. Two house platforms, probably modern, with rough pavement connecting them. The larger is 24'x20', in two stages on all but E. side. Outer ledge 4' wide. Height of outer foundation 12", of inner 4". Smaller platform 10'x10'x1'. The connecting pavement of rough stone is 16'x16'.

Site 56. Recent ruins in lot. Platform of recent house, 28'x24'; not raised, foundation faint. This corner of the lot has been filled about 4' high. In front of one deserted house is a platform and on the S. side are a three-sided pen and rude pavements.

Site 57. Very conspicuous platform and pits. [(Use unknown; it may have been a bathhouse; there is no tradition connected with it.) See Addenda.] Dimensions over-all roughly 100'x180'; see plan on following sheet. The height on the S.W. and N.E. is about 3'; on the S.E. height was once about 6', but is now obscured by rocks thrown out of pits over the edge of platform. On the platform there seem to have been postholes. The pits were excavated in the platform probably many years after it was built. They vary in depth 2' to 6' below the platform level. The pavement is rather rough, of middling large stones.

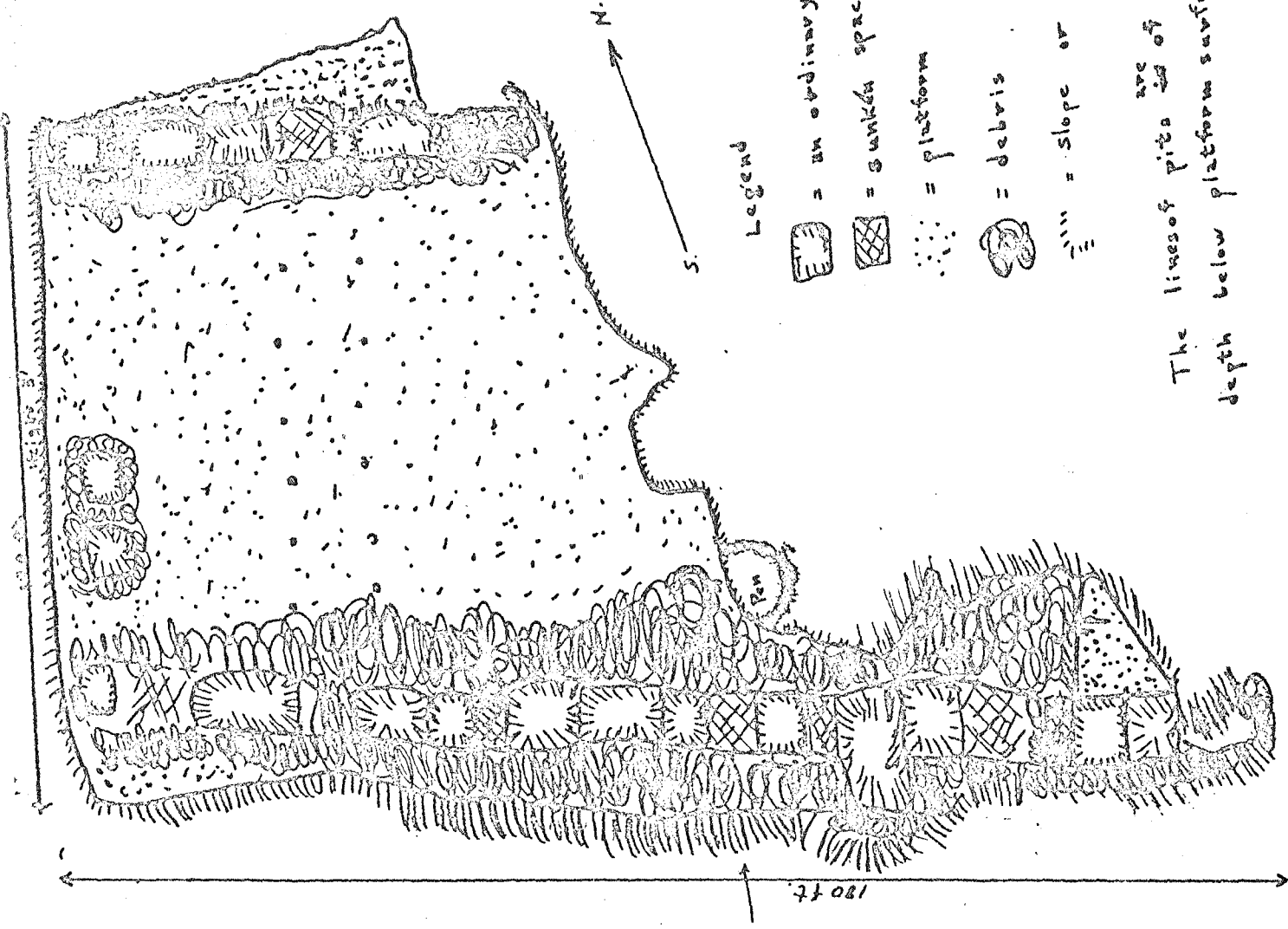
Site 58. House site 18'x16'x1/2'; distinct foundation.

Site 59. Loose rock, possible house site.

Site 60. "Waterhole." Now a mudflat with coarse grass and noni trees. Probably was formerly deeper and surrounded by small platforms of loose stones.

Site 61. House platform 74'x28'x2'; recent; good foundation, paved with middling rough stones.

Pahoehoe shelf



Height 2 1/2 ft

Legend

- [Square with diagonal lines] = an ordinary pit
- [Square with cross-hatch] = sunken space, not a pit
- [Dotted pattern] = platform
- [Irregular shape with hatching] = debris
- [Wavy line] = slope or elevation.

The lines of pits are of unequal depth below platform surface, 2'-6'.

Kaawala to Keopuka

P. 8

Site 57

Large platform with excavated pits. Thought to have been a house.

Scale 1/300

Site 62. Three adjoining house platforms; recent.
 62a. 12'x12'x2'.
 62b. 28'x24'x3' plus a porch 12'x10'x1'. Small pen between them.
 62c. 32'x22'x1'; not so recent as 62a and 62b; rough, small flooring; foundation.

Site 63. Large house platform 46'x30'x1-2'; fairly recent. The main part is 40'x30'; S. end 16'x25' or more is rough and probably a lanai. Pen adjoining mauka, inside dimensions 6'x6'x1-1/2'.

Site 64. House platform 20'x26'x1'. Much dilapidated and rough; small stone pavement; foundation. To the north is a natural pit, 10' in diameter and 3' deep.

Site 65. Spring under shelter of a cliff. About 6' below the surface, approach by walled-up path. Contains at present only a very little brackish water.

Site 66. A long, low heap of rocks, 30' long, alongside a slight slope. Useless.

Site 67. A layer of stones (rough) 4'x4'x1'.

Site 68. A layer of stones (rough) 6'x6', flush with the ground, in a natural depression.

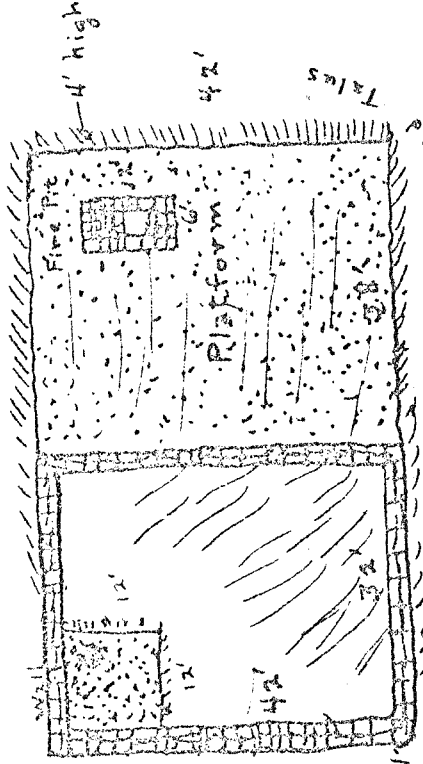
Site 69. A group of three house platforms in depression back of heiau, Site 70.
 69a is 8'x8'x2' including foundation; very rough floor. 69b is backed by and is lower than a low cliff wall, and has a shelter cave at the W. end; dimensions 8'x20'x3'. 69c is 24'x20'x2-3'. Both 69b and 69c are rather rough. Part of the depression in front of them is filled in.

Site 70. FISHING HEIAU. 24'x41'x38'x48' ground measurements; top smaller by 2' each way. Broken down by the waves on makai sides. On the mauka sides it is 8' high. The top slopes from W. To E. On the S. side there is a lower level, 2' below the top. Back of the heiau is a low wall 2' thick inclosing a lot 31'x27'x31'x37' inside. At the N.W. corner is a house platform 16'x12'x1'. Back of the lot is a course of rough stones about 20'x10'; with upright stones on either side--use unknown. See the plan on following sheet.

Site 70a. Ruinous HEIAU. As it is torn down except near the altar, some measurements are approximate. About 52'x28' overall; height at altar 4', along sides was probably about 2'. See plan on following sheet.

Site 20.

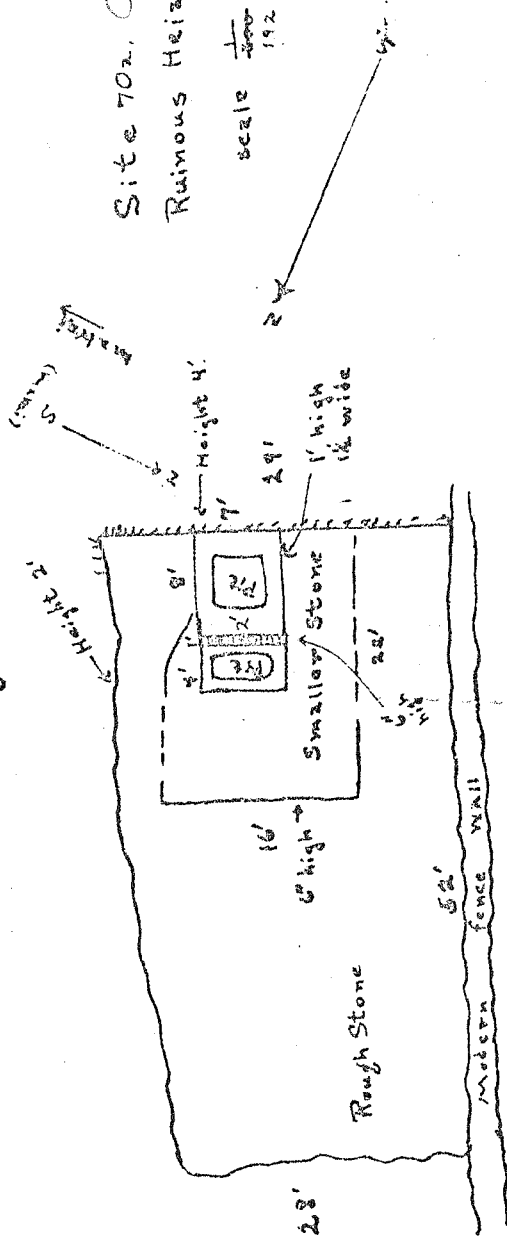
Possible Heiau:
scale $\frac{1}{300}$



Site 702, C23710

Ruinous Heiau

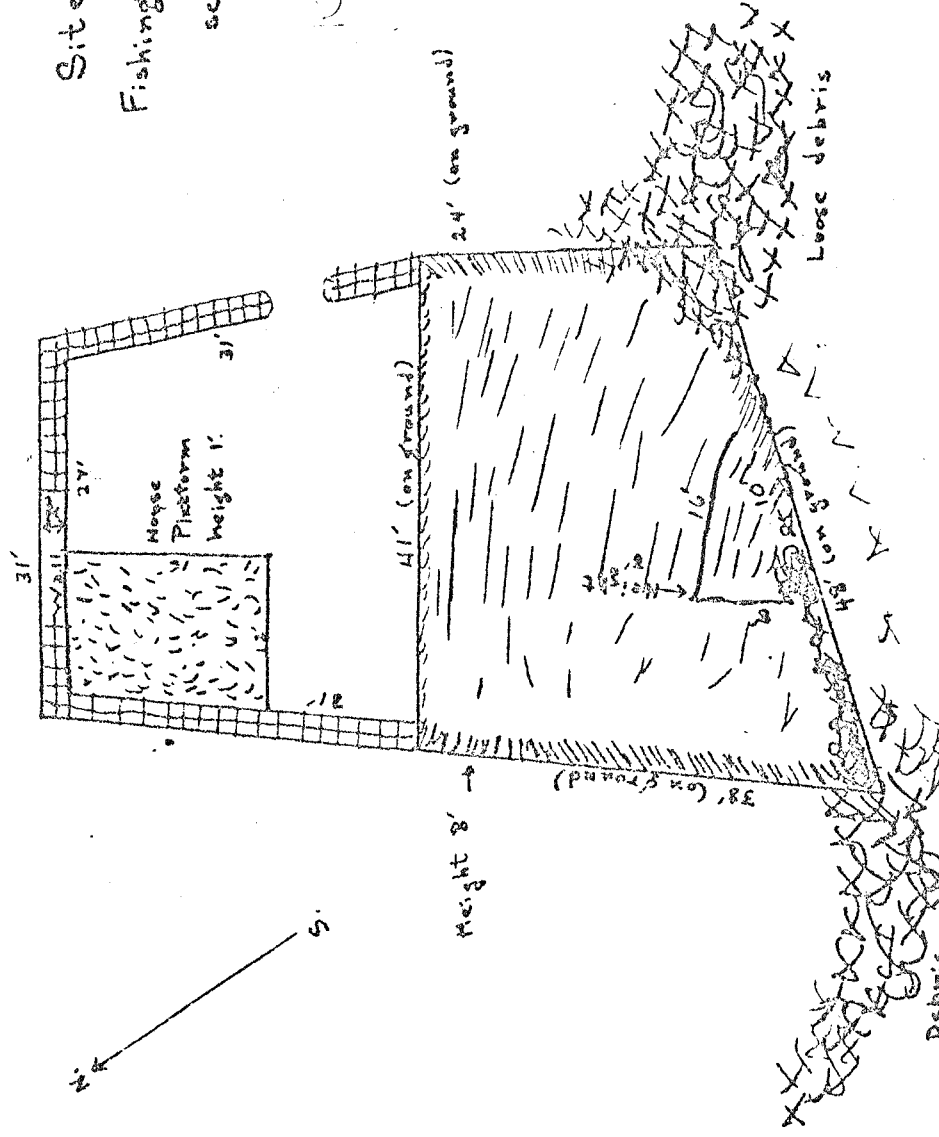
scale $\frac{1}{192}$



Site 70 C2379

Fishing Heiau near L.I.

scale $\frac{1}{192}$



SITES ALONG THE KAAHALOA-KEOPUKA SHORE.

From the Fishing Heiau on, the sites generally have their long axes toward the open coast, and form a settlement fairly distinct from that facing upon Kealakekua Bay. As this part of the Kaaaloa village was the first to be deserted, the sites here are more ruinous, and more likely to be of considerable date. Three cocopalms remain from what must have been a large palm grove. The only trace of a fresh water supply is the shallow well, now dry, at Site 101.

- Site 71. Double platform on slight elevation. First platform is about 50'x13-15', with facing at mauka side about 5' high. It joins a second platform about 19'x19' bearing a house platform of rough, large stones, 13'x13'. The first platform is also built of very rough, large stones. Makai is a very thick wall 50' long.
- Site 72. Natural depression forming a rude shelter cave on the mauka side; incomplete fill on E. side.
- Site 73. Pens and house platforms. First on E. are walls 2' thick and 1-1/2-3' high inclosing a pen, raised above the ground level 1-1/2', inside dimensions 5'x4'; and a roughly paved platform 8'x10', one foot high at the front, which is open. The next pen is roughly crescent shaped, inclosing on three sides a platform of small stones 8'x8', the fourth side open over a crevice in the rock. The pen to N.W. is modern. There is a short piece of wall between Sites 71 and 73.
- Site 74. Ruin of doubtful nature. A very roughly inclosed pit, nearly filled up.
- Site 75. Ruin of doubtful nature, of rough stones, like a platform with a pen-like depression.
- Site 76. Large, scattered stones and a fragment of wall.
- Site 77. Rude house platform 14'x7'x2' (on two sides, backed on others by pahoehoe). Heaps of stones nearby.
- Site 78. Five large stones containing salt pans. three built into outside of L.H. Res. wall, one built into inside, one off the ground inside. Dimensions of salt pans:
- No. 1....25"x22"x1"
 No. 2....17"x12"x2"
 No. 3....18"x16"x1-1/2"
 No. 4....19"x16"x1/2"
 No. 5....17"x16"x1-1/2"
- Site 79. A series of small house platforms with floors of small stones and distinct foundations.
- 79a. 17'x12'x1-2', floor 11'x9'.
- 79b. 16'x14'x1-2', floor 12'x11'.
- 79c. About 10'x10'x1' irregular, floor about 5-1/2'x5-1/2'.
- 79d. About 9'x9'x1', floor about 6'x6'.
- 79e. Double platform, total length E.-W. 18', width of mauka section 13', of makai section 17', one foot high on S. side. Mauka floor 6'x7', makai floor 6'x13'.

- 79f. 15'x11', floor 9'x6'. 2' high on E. side, on other sides fits into depression. Rough filling on two sides.
- 79g. 16'x15', floor 14'x13'. Two feet high on N. and E., fits against pahoehoe on S. and W. Very well built. Fireplace in center, 18"x16"x6" inside.
- 79h. 13'x11'x1', floor 8'x7'. Well built. Hollow bubble in pahoehoe just makai.

Site 80. Wall 2-3' high, 2-1/2' wide, 390' long including a gap of 55'. Stones are scattered makai of the wall, and especially at the E. end and between it and the L.H. Res. pen. At the E. end is
 Site 80a. Rough house platform 12'x8'.

Site 81. A fill platform in a small depression against the long wall, triangular 8'x10'. It shelters a small cave.

Site 82. Rough inclosures formed by rows of large stones. Farther east are several rows and heaps of these stones. Among them are several containing salt pans, at least seven in number. Two of them measure 30"x24"x2" and 18"x12"x1" (irregular).

Site 83. U-shaped heap of small stones, 4' wide and one foot high, with retaining foundation.

Site 84. Three rows of large stones makai of long wall. 84a forms a pen 35'x30' with back to wall; 84b has two sides, 18' and 24'; 84c is one row about 12' long.

Site 85. Fragment of a wall, 3' high, 3' thick, 50' long. 125' to S.E. is a very small fragment of the same. About it are many rudely heaped ruins with little hollows where trees probably were planted.

Site 86. Large, rough shelter cave; no sign of occupancy.

Site 87. Very rude pen in the midst of rubble, 10'x10'x3'.

Site 88. A line of twenty-three ruins, all but 88o being house platforms, lying back of the long wall, and forming a kind of connected street. Most of the houses opened makai. Floors are of small stones unless otherwise indicated.

88a. 12'x11', floor 11'x10'; 2' high on S., adjoins pahoehoe on other sides.

88b. Two floor spaces and connecting space on one platform, 2' high mauka. Length of platform 29', width 12'-8'-10'. Floors 4'x8' and 8'x11'. One floor is faced on the south with large flat rocks.

88c. 12'x9'x1-1/2', floor 3'x6'.

88d. 11-1/2'x10'x1-1/2', floor 8'x6'.

88e. 14'x11'x1', floor 10'x9'. Lowest of the row.

88f. 18-1/2'x9-10'x1-1/2-3'. Floor space 9'x5-1/2' mauka, while 8'x9' makai is paved with large, flat, well-fitted stones. In N.E. corner is a pit 3'x2', 3' deep. At this site is a piece of stone with a natural bubble forming a heart-shaped cavity, possibly used as a lamp.

88g. 15-1/2'x12'x1-1/2' (mauka), floor 12'x9'.

88h. 15'x14', mostly flush with ground, floor 10'x10'. The space 14'x4'x1' makai is rough, probably a lanai; doorpath thru its center.

88i. 16'x16'x1-1/2', floor 12'x10-11'. Ten feet in front of it and about 1-1/2' lower is a platform in two sections, 14 plus 6'x6'x1', like a long house platform. It was probably used as a lanai, and the intervening space roofed over.

- 88j. Platform conspicuous for thick retaining foundations. Platform proper about 16'x14', floor 12'x10'. On N. and S. sides are ledges paved with large, roughly flat stones, 5-1/2' and 4-1/2' wide respectively, 6" lower than the platform. There is a sort of wall 4' thick on the W. On makai side is a roughly paved platform about 20'x10', flanked by the wall; also a rude platform mauka. Hollows on the other two sides are filled with large stones. Entrance to platform on makai side with two small, low steps. Small firepit in center.
- 88k. 15'x15'x1/2-1-1/2', rather rough floor 12'x11'. Large flat stones on S. and S.E.
Adjoining platform about 12'x12', rather rough floor about 8'x6'. Two feet high on N. and W.
There is a neatly walled pit at N. where the platforms meet, inside dimensions 6'x6'x4'.
- 88l. 12'x11'x1-3', floor 8'x6', foundation forming a slight pen-like rim. On W. side is a buttress retaining wall 10'x3', with a filled in platform 2' wide.
- 88m. Two adjoining platforms: southern one 15'x13'x1', floor 10'x7'; northern one 10'x13'x1', floor 7'x7'. A kind of pen 6" high, 10'x10', past the N. end.
- 88n. Two platforms built upon one common supporting platform. Mauka platform 14'x13'x2', floor 11'x9'. Makai platform 15'x10'x2', rough. Of this, 8'x10' seems to be a house site.
- 88o. Pen with ruinous walls, inside dimensions 21'x14'. At N.E. end is a well-walled pit 3'x2-1/2'x2', with a platform just makai 6'x4'. This pen may have been roofed over and used as a cookhouse.
- 88p. 15'x12', floor 12'x10'. Flat stones 10'x4' makai.
- 88q. 16'x15'x0-2', well built, floor 11'x10'. Firepit.
- 88r. 17'x13'x1/2-1', well built, floor 14'x11'. Firepit.
- 88s. 12'x8'x0-2', roughly built of small stones, floor 10'x7'.
- 88t. 18'x12'x0-3', well built, floor 15'x10'. Firepit.
- 88u. 12'x13'x0-2', well built, floor ~~2x2x2~~ 10'x10'.
- 88v. 12'x10'x1/2-2', well built, floor 9'x8'.
- 88w. 12'x12'x1', rough foundation floor 10'x8'. Firepit.

Site 89. Adjoining pen and platform. Pen walls are ruinous, 2' thick and 1' high; inside of pen 9'x11'. Platform 10'x12'x1/2', floor 7'x7'.

Site 90. Very rough platform of large stones 12'x8'x1-1/2', with extension and rocks on pahoehoe forming a sort of pen.

Site 91. Smoothed platforms on the aa/slope.

- 91a. Approximately 50'x32', taking advantage of an abrupt cliff about 6' high on the S.S.E. side. Rude wall of aa fragments on north side. Two enclosures marked off with small stones on the floor. A path descends across the aa toward the sea. Pit 3'x3'x2', right under juncture of path and platform.
- 91b. Roughly levelled aa, in two levels. No definite site.
- 91c. Roughly levelled aa, built up on W. side, about 20'x20'. Probably a house site.

Site 92. House site on the aa, roughly 22'x13', distinguishable only by the elevation in front, 12"-15".

Site 93. Partly natural platform on aa slope, built of aa and fairly smooth. The artificial part about 40'x30'x4'.

- Site 94. Conspicuous straight path, sometimes pointed out as a holua, altho there is no local tradition to support this view. It is about 675' long below the Keauhou Road and about 125' above the road, to the foot of the cliff. The width varies from 7' to 12', averaging 10', and it is raised about 1'-2' above the surface. The retaining layer on either side is well laid but not conspicuous. The stones forming the body of the path are for the most part no bigger than one's two fists together. Its degree of slope and its workmanship are remarkably even,--which favors the theory that it was a small holua. Its narrowness and the fact that it breaks off abruptly at the beginning of a mass of ruins, point to its being only a path.
- Site 95. Very well-built pen, probably recent. Built on a ridge; walls 3-1/2' thick; inside dimensions where intact 24'x15'x5'. By W. mauka corner, rising only one foot from ground, is a U-shaped wall, inside 12'x6'x6'. Shelter pit on E. makai side.
- Site 96. Large walled platform on small ridge. Exact measurements impossible because of cactus; about 75' long and 25-40' wide. About 2' high on W., 3-5' mauka, 2-5' E., indefinite makai. The mauka wall, which is crouched, rises above the platform like a rampart. House platform, approximately 25'x25', at W. end; rough; contains firepit.
- Site 97. A complex of ruins probably dependent upon Site 96. Measurements inaccurate because of cactus. It consists of several walled pens, one walled enclosure which may have been a house platform, and several lines of rough stones. All is rough and ruinous. The walls are mostly 3' or over in thickness, broken down in makai sections, but about 3' high on mauka side.
- Site 98. A very old pen, with ruined walls of large stones, 3' thick. Total dimensions about 26'x18'.
- Site 99. Eight small house platforms forming a group.
- 99a. 18'x10'x1', narrow foundations, rough, in good condition.
 99b. 12'x12'x1', floor 8'x8', step on W. side.
 99c. 16'x12'x1', floor 12'x8'.
 99d. 11'x10'x1', floor 7'x6'.
 99e. 16'x11'x1', floor 13'x8', rough but well laid.
 99f. 10'x8'x1', floor 8'x7'.
 99g. Two room platform, each half 10'x8', with floor 6'x6'; two feet high on W.
 99h. Double platform in depression. One of rough rocks, inside dimensions 14'x9'; the other of small smooth stones, inside dimensions 10'x9'.
- Site 100. A mass of old ruins, accurate measurement impossible because of cactus. Consists of several small pens inclosed by walls in ruinous condition, averaging 1-1/2' high and 2-3' thick; one rough house platform about 12'x8'x1', and four masses of rough rock which may have been small platforms. Total length of ruins about 75', total width about 50'.
- Site 101. A dry well inclosed by a wall 18'x18', and by several layers of rough rock. The well is about 5' in diameter, 5' below the layer of flat stones, and 7' below the ground level outside the wall.
- Site 102. Slight ridge covered with rough stones, dimensions roughly 50'x25'; probably a very old house site. Between it and Site 101 are also rough stones.

- Site 103. Pen and rough platform. The pen has a good wall on the E., broken on N. and W., natural bank makai. Walls about 3' thick, 40' and 25' long. Rough double platform about ~~22'x12'~~ 16'x6'.
- Site 103a. Very rough platform about 30'x10', divided into two sections by row of large stones. Adjoins Site 103. Crossed by footpath which continues Site 94.
- Site 104. Low pen 30'x15' containing a house platform 13'x13'x1/2', floor 10'x10'.
- Site 105. "The Execution Pits." Blowholes near the beach into which, according to local tradition, criminals used to be thrown, to be drowned and battered to death. There are blowholes along the whole half mile of Keopuka coast nearest Kaawaloa; these probably gave its name, Sounding Hole, to the ahupuaa.
- Site 106. At terminus of the straight path, Site 94. A very rough platform 16'x10' with adjoining smooth platform 6'x6'.
- Site 107. Four bits of an old wall.
- Site 108. Pen, walls 2' wide and 2' high, dimensions 39'x45'x45'x35', inclosing house platform 16'x14'x1', with floor 12'x9'. Small cave almost under the platform. Just outside the pen is another platform.
- Site 108a. House platform in a depression, 10'x8', floor 8'x6'.
- Site 109. House platform of rather rough a-a blocks, in the "river" of the aa flow back of the Execution Pits. Dimensions in widest place, 27'x22'x5'. Firepit in center. A ruinous wall runs in pieces to the straight path, length 125'.
- Site 109a. A large heap of stones, about 4' high.
- Site 110. Several small platforms of rough aa, at the foot of the aa flow, too small to be of practical use.
- 110a. On elevation. 10'x8'x3'.
- 110b. In hollow. 8'x6'x3'.
- 110c. A hollow table, 12'x10'x3'.
- 110d. In hollow. Crescent-shaped mound, 25'x6'x3'.
- 110e. On elevation. 11'x11'x2'.
- 110f. In mouth of a gully. 8'x8'x2'.
- 110g. At foot of aa. 8'x6'x2'.
- Site 111. Area roughly levelled up with large stones about a platform 6'x6'x1'.
- Site 112. Two caves at the head of a gully. Both are about 3' high, one about 25' long, the other 40' long. The larger is a fairly comfortable shelter.
- Site 113. A small sand-bottomed cave, divided by stones into two shelters each large enough for one man. Still in use. By this site is a salt pan 18"x15"x1".
- Site 114. Three-sided enclosure of large, loose rocks, 16'x10'.
- Site 115. House platform of rather rough stones, 24'x18'x3', floor 15'x10'. Steps in front; firepit. Loose rock scattered about. Large salt pan, sides 40"x20"x25"x20"; 2" deep.

- Site 116. House platform similar to site 115, and probably, like it, of fairly modern date. 24'x18'x3', floor 19'x12'. Fills on N. W.
- Site 117. Pen, fairly recent, in good condition. Walls 3' thick and 6' high; outside circumference about 66'.
- Site 118. House platform with a complex of low walls. The platform is 33'x25'x3', floor about 24'x17'. Firepit at back. Double foundation with doorstep in front, also space of rough paving for lanai. The step is 2' wide, the lanai 4-5'.
The pen walls are mostly tumbledown, and in places are more rows of rocks, but the two lower pens, on the E., measuring 12'x12' and 17'x7', are well inclosed. At this part are three salt pans, measuring irregularly 33"x17"x2", 20"x12"x2", 22"x18"x1-1/2".
- Site 119. Smoothed aa and small heap of stones.
- Site 120. Path across the aa. Upper portion marked by stepping stones; lower portion banked up by retaining wall in two places.
- Site 121. Path across aa. Stepping stones along its entire length.
- Site 122. Several ruins of rough aa on aa slope by path.
- 122a. J-shaped inclosure 12'x9'x16', with wall 2' high. Small line of stones making a small J inside the large one.
- 122b. Four very small heaps.
- 122c. Two U-shaped inclosures, one 9'x6'x6', the other 6'x6'x6', both 1-1/2' high.
- 122d. Pen 16'x10-12', 2' high.
- 122e. Two tiny heaps of stone.
- 122f. Levelled, fine aa, possible house site.
- Site 123. Remains of a pen with rude aa wall, joining raised path. About 12'x12' inside.
- Site 124. House platform. Broken down on one side; firepit and slight heap of stones on surface; built of aa. Dimensions roughly 20'x18'x3-4'. A short section of wall or windbreak at one corner.
- Site 125. House platform, also of aa, rather rough; dimensions 14'x12'x2-4'. Windbreak at one corner.
- Site 126. Walled pen, partly natural, containing three very rough small platforms. Walls broken down, average 3' wide and 3' high; total perimeter inside 106'. The platforms are respectively 9'x4', 9'x12' (these two adjoining), and 9'x6'. Back of the pen is a walled up depression, diameter roughly 11'.
- Site 127. Rude house platform on pahoehoe, about 12'x9'x1/2'. Adjoining it is a very small pen marked by a row of stones.
- Site 128. Three small aa mounds.
- Site 129. Doubtful aa platform, about 20'x18', and two low aa mounds cut by a path.
- Site 130. Smoothed aa, and mound 4'x3'x1'. Probable house site.

- Site 131. Depression with bank on E. side. Smoothed as a shelter (still in use occasionally), 16'x5', and 5' high. Small windbreak to N.W.
- Site 132. A complex of platforms and pens. The nucleus seems to be the platform 132a, 20'x24'x2', rather rough, and bearing a smooth platform 9'x9'x1/2'. West of it is a rather rough platform 12'x6' backed by a wall, and between the two is an area covered with small loose stone, possibly a platform (132b and 132c). Back of the main platform is a smoothed area of aa (132d). Below it, makai, is a fairly smooth platform 12'x10', and two platforms of large, very rough stones, one 12'x10', the other smaller, of uncertain dimensions, (132e, 132f, 132g). To the W. is a rough platform 12'x9'x1' (132h). Back of it, in the clear, is a rough platform 12'x6', with an area of rough stones, perhaps a platform, 9'x9', adjoining it on the W. (132i). The pen walls are of various heights and widths, from 3'x3' to mere rows of large rocks, or natural depressions.
- Site 133. A pen surrounding two house platforms, 133a and 133b. The pen is about 80'x60', with walls 3' wide and 2-3' high. Platform 133a, on an elevation, is 22'x20'x1-4', floor 18'x17'. On it is a broken salt pan about 16"x13"x1", and a small irregular salt pan. Platform 133b is 14'x14'x1', floor 12'x10'. Back of the pen are two smoothed areas of aa, the larger 24'x18' probably a very old house site; and two tiny ruined pens of aa, with a small mound (133c, 133d, 133e); also bubble cave.
- Site 134. Pen about 40'x36', with walls 2' wide and 2' high, enclosing a house platform of fine aa, inside dimensions 14'x13', foundations one foot high.
- Site 135. Stones covering area about 40'x15'. Probable site of house platform.
- Site 136. Low, ruinous aa pen.
- Site 137. Low mound on little plateau of aa.
- Site 138. A mass of small fragments of aa, piles into a distinct wall on two sides, the other sides broken down. The upper part of the inclosure was a platform perhaps 16'x14', but is now covered with aa from the walls.
- Site 139. Bubble cave at edge of aa; about 8'x10'x4' exposed, and a small portion covered.
- Site 140. Two platforms of rough pahoehoe fragments, on low knobs on the pahoehoe. The one mauka is 11'x12'x3', the one makai somewhat penlike, triangular 12'x12'. Farther makai are two rough little heaps of stone.
- Site 141. Very rough platform of aa fragments, in a depression, 12'x6'. Nearby is a bubble in the pahoehoe, forming a cave exposed 7'x5'x4'.
- Site 142. A group of small low platforms on the slope of the aa flow, probably puca or grave mounds, artistically arranged in a crescent on the slope. In the hollow at the foot of the flow is a very rude platform of aa, one foot high, composed of five low heaps connected by loose rock: total dimensions about 30'x18'. The mounds above measure, from makai: 7'x7'x2', 6'x6'x2', 12'x6'x3', 6'x6'x1-4', 15'x3'x1', 6'x6'x2', 7'x7'x1', 15'x10'x1/2'. At a distance of about 60' is a similar mound 7'x7'x2'; at a distance of about 100' in the ~~xxxx~~ opposite direction two small heaps of aa.

SITES TOWARD KEANEKANIKA POINT, SHOWN ONLY ON LARGE SCALE MAP.

- Site 143. In the midst of the aa flow is a tract of very fine aa lying in ridges east and west. At least three seem to have been heaped up artificially; probably used as a burial place.
- Site 144. Small hoiau and surrounding structures; indicated as "temple" on U.S. Coast and Geodetic Survey map. See plan on separate sheet. The surrounding ruins are:
- Two pens or windbreaks, one with wall 4' wide and 2' high, inside dimensions 12'x12', the other with wall 4' wide and 4' high, inside dimensions 9'x6', well preserved.
 - Pen outlined on the pahoehoe by large stones, about 12'x12'.
 - Small cave formed of a bubble in the pahoehoe, and a shelter cave against the low cliff.
 - Flat ledge of pahoehoe used as a house site, 20'x14-18', 2' high, in front, with ledge behind; at one end a filled platform 6'x6'x1'.
- Site 145. The walled foundation of a house, 22'x16', inside dimensions 16'x12'. Two enclosures of loose large rocks one foot high, 15'x6' and 8'x6'.
- Site 146. Very rough house site, 12'x12', surrounded by a wall 1-1/2' wide and 1-1/2' high.
- Site 147. Walled-up shelter cave against a bluff, about 13'x10'x6'; still in use.
- Site 148. Walled windbreak against the cliff, forming a sort of pen 10'x10'x6'.
- Site 149. Walled hollow against the cliff.
- Site 150. House site, partly on bare pahoehoe, partly of rough pahoehoe blocks, 18'x12'x2'.
- Site 151. A bubble in the pahoehoe, probably used as a dwelling, as it is surrounded by a wall now intact on only two sides. The bubble is 12'x8'x5', the wall 20'x20', ~~22~~ 3' thick, 1-1/2' high.
- Site 152. Probable house site, a pahoehoe ledge partly filled up and surrounded by a wall. Total dimensions about 18'x14'.
- Site 153. Rude enclosed platform on pahoehoe, inside dimensions about 10'x8'.
- Site 154. Very rude triangle of stones, 14'x10'x8'.
- Site 155. Pen with walls 2' thick and 2' ~~gt~~ high, inside dimensions 6'x6'x3'.
- Site 156. Pen, badly ruined, in a hollow, inside dimensions about 6'x6'x2'.
- Site 157. Very rude house site, only 7'x5', with walls 2' thick and 1' high on every side but makai.
- Site 158. Very rude enclosure about 25'x6-10' around a shallow cleft in the pahoehoe.

Site 159. Three small enclosures, two together with very ruinous walls, inside dimensions 8'x6' and 6'x6', and the other near, walled on two sides 12' and 10'.

Site 160. HEIAU, 24'x16-18', averages 4' high above the pahoehoe. It is oriented almost exactly north and south. See plan on separate sheet.

SITES IN KEOPUKA NEAR THE ONOULI STONE WALL.

These may be divided into three groups: those forming a scattered line along the pahoehoe flat to the south, continuing Sites 143-160; those on the rising ground just south of the stone wall, where there has been habitation within the past thirty years, and the very old, but well preserved, ruins on the narrow flow of aa. For convenience sake these have been lumped under Site 170; they are separable into several groups, most of which are undoubtedly traces of dwellings, although a very few may be burial sites.

Site 161. House platform of pahoehoe fragments, 15'x11'x6' high on north, 1' high on S. flush with rock E. and W.

Site 162. Carefully built pen, inside dimensions 11'x10', wall 3-3-1/2' high, 2-1/2' wide

Site 163. House platform with sides 13', 13', 16', 18', floor 12'x12'. Adjoining it makai are two open pens, 10'x8' and 12'x10', with walls 4' to 6' thick.

Site 164. House platform 12'x10'x1/2-1'.

Site 165. Rough house platform 10'x10'x1/2', with pen, inside 9'x9', with walls 3' thick and 1-1/2' high, and two rude platforms adjoining.

Site 165a. House platform 18'x16'x3' surrounded by irregular walls 3' thick and 1/2-3' high; contains a firepit.

Site 166. Pen with solidly built walls 3' thick and 3-4' high, inside dimensions roughly 19'x27'. It may have contained a well laid platform, but is now chiefly occupied by two pits. Back of it are two rude circles of great stones.

Site 167. Two ruinous pens of usual type, each 10'x8'x1-1/2' inside.

Site 168. House platform about 12'x10'x2', rather rough, floor 6'x3'.

Site 169. Two mounds on the pahoehoe, each about 10'x8'x2', and a very rough partly natural pen.

Site 170. Ruins on the aa flow. Nos. é-g from one group, n and o a second, p-r a third t and u a fourth, the rest are more or less distinct from one another.

a. Platform 13'x13'x3-1/2'.

b. Pen, outside 22'x20'x4', inside 16'x14'x4'.

c. Pen, inside 12'x12'x3'.

d. Very rough little platform, 6'x6'x1'.

e. Levelled aa about 24'x24' with slightly raised border.

- f. Pen, inside 11'x13'x1'. Adjoining are rough platformlike mounds.
- g. Small heap 3'x6'x4'.
- h. Level aa surrounded by broad band of heaped aa, once a fence; inside dimensions 28'x26'.
- i. Mound 18'x10'x4'.
- j. Trace of platform.
- k. Platformlike mound.
- l. Wall of aa.
- m. Partly natural circular enclosure.
- n. Platform 16'x20'x3', in good condition. Has two small pits and a little circle of stones on top; in front are slight rows of aa.
- o. Platform 12'x10'x3'.
- p. Enclosed floor of aa, about 24'x15'.
- q. Platform on stone wall, 12'x10'x2'.
- r. Three small pens with aa walls.
- s. Very small shelter of aa.
- t. A platform levelled in the aa, the smoother portions about 30'x45' irregular, and the rougher portions covering nearly an equal area. It contains three platforms, 6'x7'x3', 12'x12'x4', and 10'x8'x3', and a pen 6'x6'x2' inside. The approach on the N.W. is up an incline; general elevation is about 2' above the surrounding aa.
- u. Two small, rude pens.
- v. Small pens.
- w. Pen 18'x15'x2', perhaps a house site.
- x. Very rough platform about 30'x24' with four tiny heaps of stone. Another indistinct platform mauka is about 12'x10'.
- y. Indistinct clearing perhaps 40'x30', with two low heaps and a stepping stone path across it. Mauka are two rude little pens.
- z. Small penlike shelters against a bank of aa; the largest is no more than 5'x5'x3'.
- aa. Very small pens with walls 3' high--half as high as long.

Site 171. Walls about 5-6' high and 4' thick, inclosing an area 20'x18'.

Site 172. Ruinous house platform about 24'x16'. Under it is a shelter cave in daily use by fishermen.

Site 173. Several recent pens, one containing a house platform in two sections, roughly 20'x16' plus 10'x10'.

Site 174. Two distinct platforms, 12'x12' and 16'x12', several indistinct platforms and considerable heaped-up large rock.

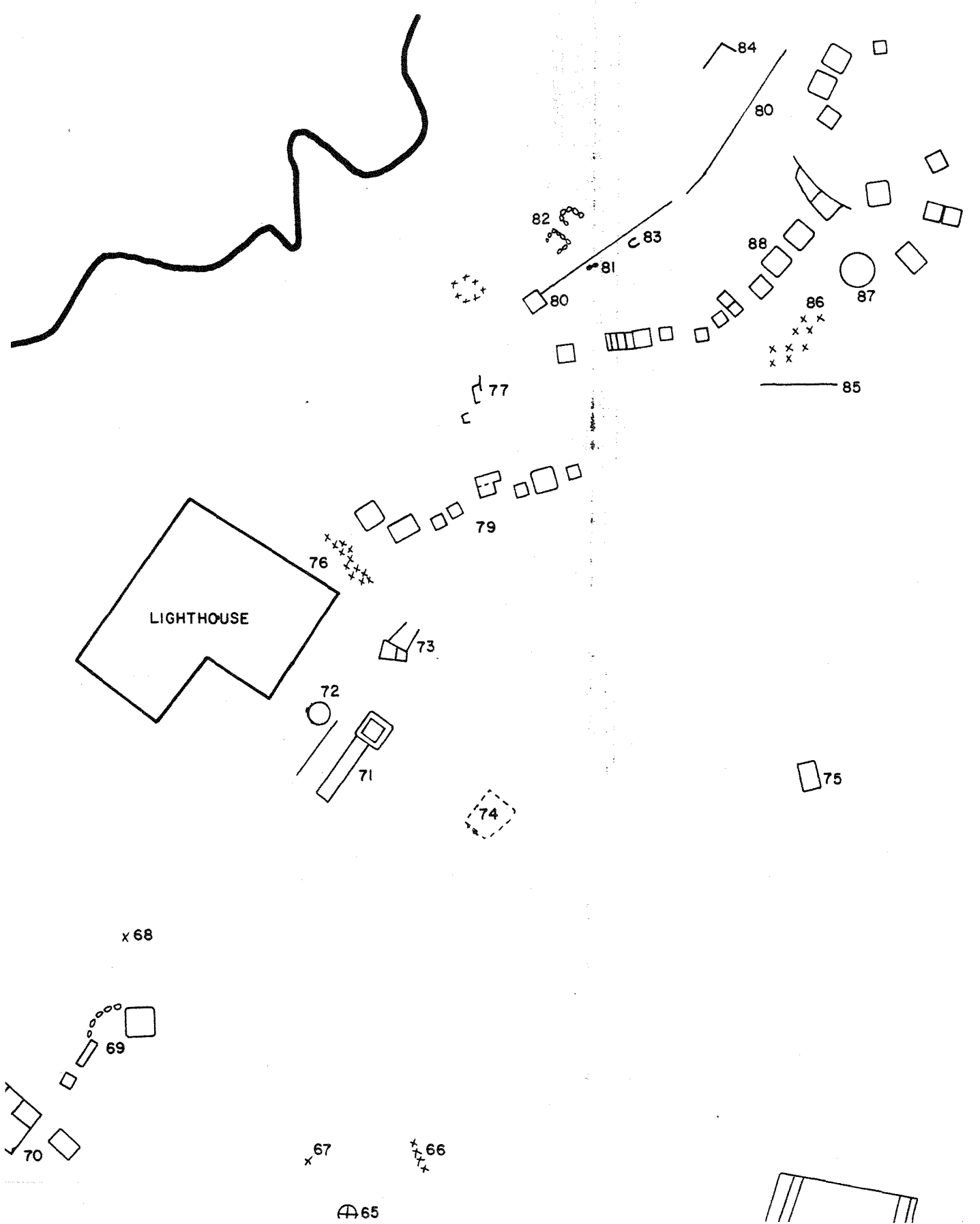
Site 175. On a small headland. A tangle of small, very rough and weathered platforms, five small ones resting upon three large ones. Total dimensions about 150'x50'.

Site 176. Triple Pen with walls 3-4' thick. From north to south the inside dimensions are 12'x12', 8'x8', and 17'x11'.

Site 177. Two rough platforms, about 18'x9' and 18'x12', the latter with a line of large stones running makai about 40'. Back of them is a dry pit 12' below the level of the hollow in which it is located--use unknown.

Site 178. A long bank bearing a platform on one side. about 50'.

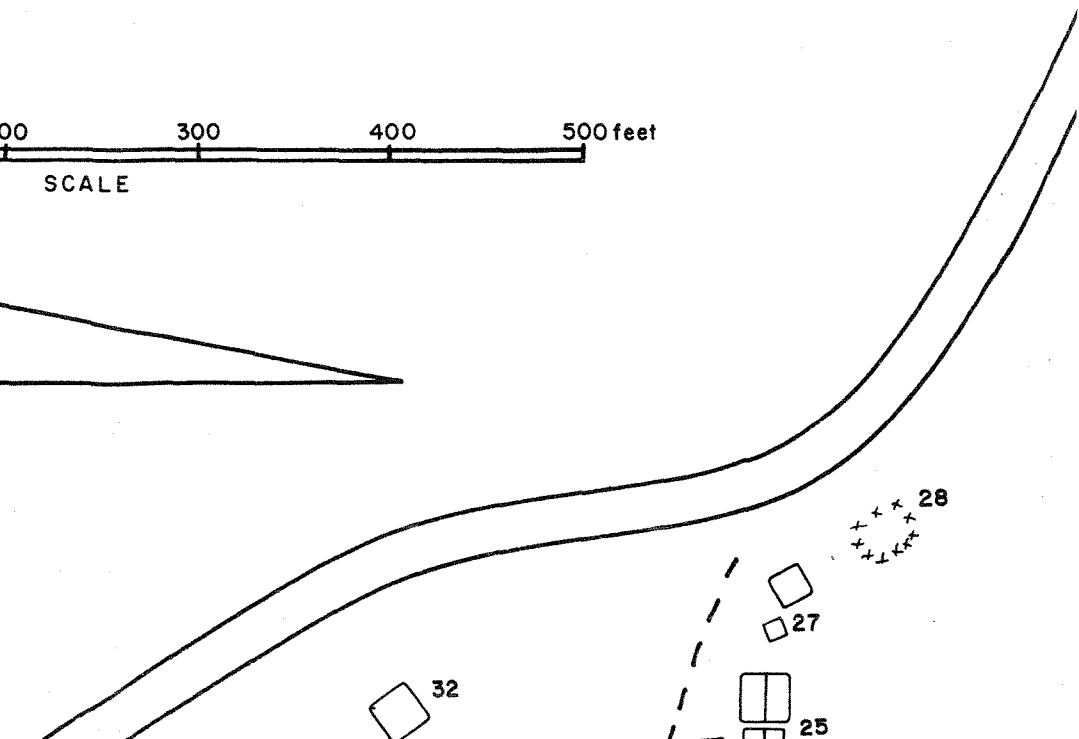
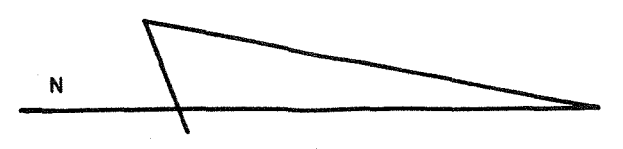
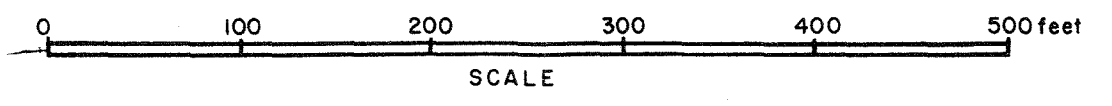
There are no other remains in this locality except a few scattered heaps of stone and some ruined pens of modern workmanship up the valley above the aa flow. In the flow, near the sea, a well was sunk fairly recently, and contains some 2' of brackish water; this may have been on the site of an old Hawaiian well.



KAAWALOA SITES

JOHN REINECKE (BISHOP MUSEUM)
1929-1930

- ⊕ SPRING
- ⊙ WELL





KEALAKEKUA BAY

ROAD

HALIILUA

64

63

62

61

60

70

59

58

57

56

52

51

50

53

55

2

5

6

47

3

4

7

15

14

13

16

18

17

10

9

12

44

45

46

41

38

39

40

42

43

36

37

30

21

22

20

24